

SPRING/SUMMER 2024

Moulton Scene



Something PEACHY is coming this Summer in the Public Gardens -

James and the Giant Peach
Save the date - Sunday 7th July 2024 - for an open-air theatre experience on your doorstep - see page 13 for further details.

GIG IN THE GARDENS

GITG 2024 will be held on Saturday 31st August and we can't wait to party with you again - all details on this year's event can be found on page 2.



This edition is packed full of new and existing initiatives that are run by Moulton Library Health & Wellbeing Hub. Be sure to check out all that is on offer and get involved. We'd love to see you!

GIG IN THE GARDENS

31st AUGUST 2024
PUBLIC GARDENS, CHURCH STREET, MOULTON, NN3 7SP
GATES OPEN AT 1PM
LIVE MUSIC 2PM - 10PM

Live music from local bands
Free bouncy castles
Food stalls
Licensed bar
More TBC

Gig in the Gardens 2024 will take place on Saturday 31st August in the Public Gardens as usual. There is one difference this year, and to keep the event going, we must make a charge for tickets. Our population has grown significantly over the last few years, and we simply cannot accommodate everyone in such an enclosed space. Charging those who attend makes it fairer for non-participating residents who will not bear the cost of the event.

Following a safety inspection last year, we were advised that the event would not be able to take place without allocating tickets due to the limited space and to ensure the safety of everyone attending - always our priority. The safety inspection deemed the Public Gardens to have a capacity of 2000. This number needs to include band members, stallholders, event stewards and sound and stage crew, staff etc.

Following the Manchester Arena bombing in 2017, the Government has and is still in the process of introducing new guidance and regulations for any large indoor and outdoor events. Any such event held in Moulton needs the approval of The Event Safety Partnership (ESP) at West Northants Council before it can go ahead. The ESP is made up of officers from West Northants Council and all emergency services i.e. Police, Fire and Ambulance. Any measures we take are as a direct result of submitting our Event Notification Form to the ESP and awaiting their response. All events held by any organisations on parish council land must follow the same guidance and ensure their event gains approval from the ESP before it can go ahead.

We did not get the ticketing right last year and for this we apologise. Listening to feedback from residents, those attending the event and learning from our mistakes last year, we have put the following procedure in place:

- 1800 tickets will be available for sale from Monday 1st July from the Welcome Desk at Moulton Community Centre. Tickets will be issued in the form of a wristband. Every member of your family will need a wristband - even babies in prams. Entry will not be given to the event without a wristband.
- Early-bird/priority booking is available to Moulton residents until Saturday 3rd August. If any tickets remain, they will be available for general sale. Please only order tickets for the number of people living in your household. This is a local family event for local residents.
- The cost of tickets will be £10 for everyone over the age of 11. Children and babies under this age can attend the event free but still need to be counted in our numbers and issued with a wristband.
- Tickets will not be available for sale on the day.
- No one under the age of 14 will be granted entry to the event unless accompanied by an adult.
- If you purchase tickets and are unable to attend, please return the wristbands for a refund and we can reallocate to another family.

Please remember that the safety of residents is always our priority and any measures we take are because of requirements from the Event Safety Partnership. Any questions regarding GITG 2024 please contact us on 01604 642202 or email info@moultonparishcouncil.org.uk

Welcome to the Spring/Summer 2024 edition of Moulton Scene. In this edition you will notice many community events taking place and lots of community groups and offers of support. Here in Moulton, we pride ourselves on putting our residents first and we just love having a safe space here at the Community Centre for everyone to enjoy. If you haven't visited us before, please do drop by and say hi. There is always someone at the Welcome Desk who will be able to provide you with information or hopefully signpost you to the relevant people that can help; we have a café on site too, so why not hang around for a coffee and slice of cake.

We are undertaking the Hanging Basket Donation Scheme again this year. Should you wish to help out, you will find further details on page 23. All donations are greatly appreciated and we can't wait to see the village in full bloom again!

Thank you to all who get involved in contributing to this magazine, it really is all about our community.

If you have anything you would like to share for the next edition, please do get in touch by email:

admin@moultonparishcouncil.org.uk

GENERAL	
Moulton College	01604-491131
Moulton Surgery	01604-644126
Moulton Volunteer Car Scheme	01604-642202
CHURCHES	
Moulton Parish Church – Pete Collins email: admin@moultonchurch.co.uk	01604-495393
Carey Baptist Church email: info@careybaptist.org.uk	
Moulton Evangelical Church – Steve Pollock	01604-404202
COUNCIL SERVICES/COUNCILLORS	
Moulton Parish Council email: info@moultonparishcouncil.org.uk	01604-642202
Moulton Community Centre – Bookings email: bookings@moultonparishcouncil.org.uk	07584-517086
Moulton Library Health & Wellbeing Hub email: community@moultonparishcouncil.org.uk	01604-642202
Moulton Library email: moultoncml@gmail.com	01604-642202
West Northamptonshire Council	0300-1267000
West Northamptonshire Councillors:	
Mike Warren – mike.warren@westnorthants.gov.uk	07702-188693
Daniel Cribbin – daniel.cribbin@westnorthants.gov.uk	07986-240144
John Shephard – john.shephard@westnorthants.gov.uk	01604-843275
Member of Parliament: Chris Heaton-Harris email: chris.heatonharris.mp@parliament.uk	0207-2197048
Police – (please dial 999 in an emergency)	101

Give Blood



Saving Lives – Do Something Amazing – Give Blood Blood Donation

The dates for the next upcoming sessions in Moulton @ Moulton Community Centre are:

Tuesday 7th May 2024

For further details or to book an appointment call the Blood Donor Line on 0300 123 23 23 or visit www.blood.co.uk

Moulton Scene Information

Edition 1 – 2024

The next edition of the Moulton Scene will be published at the beginning of September 2024 and will cover the period 1st September 2024 to 28th February 2025.

Advertisements, editorials and diary dates to be submitted by 19th July 2024 to admin@moultonparishcouncil.org.uk. ADVERTISING COSTS (incl. of VAT):

Half page Colour (183 x 130mm) £175.00

Quarter page B&W (88.5 x 130mm) £60.00

Quarter page Colour (88.5 x 130mm) £90.00

Eighth page B&W (88.5 x 62mm) £35.00

Eighth page Colour (88.5 x 62mm) £52.50

Printed by: ONEFOURSIX

T: 01604 419776 E: info@onefoursix.co.uk

Copyright Moulton Parish Council 2024. No part of this publication may be reproduced without permission of the Parish Council. The content is not necessarily the view of the Parish Council.

Keep In Touch

We try our best to give you accurate dates for all events but, over time, plans and dates sometimes change. Please keep up to date with our events, latest news, café special menus and pop-up events by following us on social media:

Facebook: [parishcouncilmoulton](https://www.facebook.com/parishcouncilmoulton), [moultonlibraryhub](https://www.facebook.com/moultonlibraryhub), [moultoncommunitycentre](https://www.facebook.com/moultoncommunitycentre), [eatatmcc](https://www.facebook.com/eatatmcc), [moultoncommunitylarder](https://www.facebook.com/moultoncommunitylarder)
Twitter: [CLERKMPC1](https://twitter.com/CLERKMPC1), [moulton_cc](https://twitter.com/moulton_cc), [moultonconnect](https://twitter.com/moultonconnect)
Instagram: [moultonlibrary](https://www.instagram.com/moultonlibrary), [eat_atmcc](https://www.instagram.com/eat_atmcc), [moultoncc](https://www.instagram.com/moultoncc)

Check out our much improved website which contains details of council activities, all the latest news, events and information for the Moulton Community Centre, Moulton Library and Public Gardens.

www.moultonnorthants-pc.gov.uk



CONTENTS

EDITORIAL

- 3 Editorial

COUNCIL MATTERS

- 5 Chairman of the Parish Council - David Aarons

VILLAGE INFORMATION, EVENTS & LOCAL NEWS

- 2 Gig in the Gardens
3 Useful Telephone Numbers
3 Blood Donation Dates at MCC
3 Keep In Touch with MPC
5 Moulton Community Transport Scheme
10 Moulton Village Festival 2024
10 Moulton Village Festival Carnival Procession
10 Moulton Village Festival Art Exhibition
10 Moulton Village Festival Fun Run
11 Moulton Village Festival Fun Run Entry Form
11 Jon & Co Estate Agents
12 PAWS@MCC Event
12 Moulton Village Festival Bingo
12 Open Air Theatre Experience (FREE EVENT)
13 Play Equipment Safety Surfaces
13 Moulton Parish Council Annual Parish Meeting/Health & Wellbeing Day
13 Neighbourhood Development Plan Review/Consultation
13 Moulton Parish Council Receives Award in National Scheme
14 Water Safety and Urban Drainage in Moulton
15 Well Pump Housing Repair at Dairy Farmhouse
23 Hanging Basket Donations
25 eat AT MCC
44 What's On
45 School Term Dates
46 What Not To Miss

MOULTON LIBRARY HEALTH & WELLBEING HUB

- 12 School Holidays at Moulton Library
16 Moulton Library Health & Wellbeing Hub
22 Moulton Library Health & Wellbeing Hub Volunteer Scheme
24 Meet, Greet & Move Your Feet
24 Cuppa Connections at Chappell House
29 Library to You
29 Moulton Library Health & Wellbeing Hub Opening Times
31 Community Larder - Moulton

- 34 Community Lunch Club
35 Moulton Car Scheme - Volunteer Drivers Needed
38 Men's Breakfast Club
38 Women's Breakfast Club
38 Mini Masters Art Club
38 Made By Me - Social Crafting
39 Moulton Library Book Clubs
48 Here if You Need Us (resources available to those in need)

SCHOOLS & COLLEGES

- 23 Moulton College

VILLAGE CLUBS AND SOCIETIES

- 28 Moulton Football Club, Moulton Morris Men, Hardy Plant Society Northamptonshire Group, White Tiger Tae Kwon-Do, Moulton Theatre, Moulton & District Gardeners' Society, Moulton Evening WI

RURAL NEWS

- 33 Parish Footpath Warden & Joint Health Walk Leader

CHURCH NEWS

- 40 Moulton Parish Church
40 Carey Baptist Church

OBITUARIES

- 41 Obituaries

INDEX OF ADVERTISERS

- 47 Index of Advertisers

MOULTON MEMORIES EXHIBITION

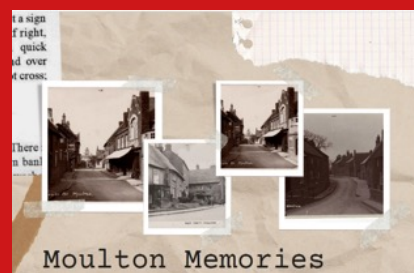
Sunday 12th - Tuesday 14th

May 2024

(DURING FESTIVAL WEEK - TIMES TBC)

At Moulton Library Health & Wellbeing Hub

Take a walk down 'Memory Lane' with the 'Bob Eady Archive' and come and help us identify some of the people and places in the old photographs we have.





From the Parish Council Chairman David Aarons

Climate Change - What can we do?

At first sight it would be reasonable to assume that, as part of the lowest tier of local government, there is little we can contribute. However, in common with most problems, I believe the contributions made by individuals and local organisations can make a difference.

There are several ways we can play our part as a Parish Council and as individuals in mitigating the impacts, while also supporting our local residents.

- Having set up a Climate Change Working Party, we now need to put it to work. This group will be expanded to include some of our newer councillors for a source of fresh ideas, hopefully together with local residents who may be able to bring skills and resources to make the initiative as effective as possible. Getting the local community involved is essential.
- Our most visible contributions concern how we manage Moulton Community Centre. It uses by far the largest proportion of our annual budget and is where we should be able to have the most immediate impact. As a responsible Parish Council, I believe we must lead by example. To this end, MPC has recently installed solar panels on the extensive MCC roof. This will significantly reduce electricity costs over the coming months and years.

- Finding ways of assisting residents to reduce household energy bills should both support them and reduce emissions. Also, MPC supports the weekly larder at Moulton Community Centre, which aims to address reduction of food waste from retail outlets as well as providing benefits for local families living with hardship.
- As a Statutory Consultee in the planning process, we will pass on comments and observations to reduce carbon footprints wherever possible. We need to understand the impact of any change to our built environment regarding energy consumption, emissions and our impact on our natural environment.
- Revisions to the Neighborhood Plan will include references to reducing energy usage and emissions, as well as supporting our natural and historical environment.

I would warmly welcome help and assistance from members of our community who have the knowledge, skills and enthusiasm to help in our efforts to fight climate change, whilst also supporting their fellow residents. If you believe you can offer assistance, please contact MPC by email (info@moultonparishcouncil.org.uk), phone (01604 642202) or by visiting Moulton Community Centre.

MOULTON COMMUNITY TRANSPORT SCHEME

Moulton Parish Council has secured over £35,000 (developer contributions) towards the cost of operating a Community Transport Scheme in Moulton and the surrounding areas. The money must be spent on Community Transport, and we need your help to spend it! For many years, a successful Volunteer Car Scheme has operated in Moulton transporting residents to and from GP appointments. As our population has grown in recent years, we have not been able to keep up with demand for transport to and from medical appointments.

We are delighted to inform you that we can now extend that service and provide you with transport to all sorts of activities at a much-reduced rate.

We have £7,000 per year for the next 5 years to spend on helping residents with the following journeys:

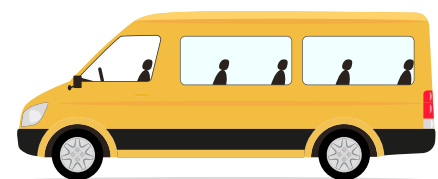
- Moulton GP Surgery, Northampton General and Kettering General Hospital and dentist appointments - will also include residents visiting family/friends in hospital.
- Events and groups at Moulton Community Centre.
- Plays and films at Moulton Theatre.
- Regular shopping trips to Morrisons, Weston Favell Centre, Beckworth Emporium, Rushden Lakes, etc.
- Visits to local attractions – Delapre Abbey, Chester House, Royal & Derngate Theatre, garden centres, etc.
- Trips to Market Harborough, Milton Keynes, etc.

If there any other journeys you need assistance for that are not listed, let us know and we will endeavour to add it to the service.

For those able to pay, there will be a charge for all journeys but at **much reduced rates**. For those unable to pay, this service will be available at no charge. Journeys will be undertaken via a service agreement using local minibus and taxi companies.

If you or any of your family, friends or neighbours don't have any access to transport, must rely on other people for lifts or maybe find driving more of a challenge in the evenings, please contact us. We are here to help and need to spend the money.

Please contact our Health and Wellbeing Team on 01604 642202 to request a lift or make an enquiry about a specific journey or trip.





For Fast Effective Computer Repairs

01604 411444

- Wi-Fi & Internet Problems Solved
- Home & Business Appointments
- New Computers Supplied and Fitted
- Remote Telephone Support
- Apple Mac Repairs
- Friendly & Professional

10% Pensioner Discount

Thistledown Barn, 204 Holcot Lane, Sywell, Northampton. NN6 0BG

www.computerdoctors.co.uk



A local family run catering business in Holcot village with over 30 year's experience within hospitality. We pride ourselves on providing high quality, delicious and attractive food.

Catering for all types of events and occasions-

Weddings, Birthdays, Christenings, Wakes, Baby Showers, Corporate Brunches/ Lunches, Pop up & Themed evenings

-BUFFETS-3 COURSE MENUS-BBQ'S-GRAZING TABLES-

We will work with you to meet your requirements and to try and achieve your budget.

FRIDAY NIGHT & SUNDAY ROAST DELIVERY SERVICE

Every Friday Night & Sunday Lunch we deliver freshly cooked food served hot and ready to eat! Weekly changing menus and specials



Pre-orders by Saturday to guarantee availability

TEL: 01604 781653

EMAIL: info@thevillagekitchencatering.co.uk

For further details visit our website

www.thevillagekitchencatering.co.uk

Don't Be Left In the Dark, Call a Bright Spark Local Fully Qualified Electrician

BS7671 17th Edition City And Guilds 2382, 2377, 2392 Part P Reg

All Your Electrical Needs

Rewires, New Sockets, lights, fault finding, outside power, Landlord Certificates, P.A.T

Has your Electrical System been tested recently? Free Advice and Estimate

Call Paul on: **07970 812522**

or email: bright-spark-electrical@hotmail.co.uk

Bright Spark Electrical



MOULTON PHARMACY

HIGH STREET, MOULTON
Tel: 01604 643817

FREE REPEAT PRESCRIPTION COLLECTION AND DELIVERY SERVICE

To save you time, we collect repeat prescriptions from the local surgery and dispense them ready for collection at the pharmacy.

If requested we are also able to deliver prescriptions to your home.

FREE MEDICINE USE REVIEW

If you would like to ask about your medication or any condition, please speak to your pharmacist, when you next visit your local pharmacy.

Opening Hours:

Monday to Friday 9.00 a.m. – 12.45 p.m.

2.00 p.m. – 6.00 p.m.

Saturday

9.00 a.m. – 12.30 p.m.

Penny Hunt

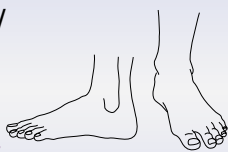
OVER 20 YEARS EXPERIENCE

B.Sc (Hons). Pod. MRCoP

Health Professions Council Registered

For all your **PODIATRY/ CHIROPODY NEEDS**

- Footcare for the Elderly
- Diabetic Foot Assessment
- Sports Injuries



Friendly **MOBILE SERVICE** in the Northamptonshire area

Tel: 07904 061269

AR GARDENING SERVICES

LAWNS CUT
WEEDING & PLANTING
HEDGES TRIMMED
FENCES/SHEDS PAINTED
REGULAR OR OCCASIONAL



CALL ANDY ON
07368 863107

FREE VALUATIONS
without obligation



CONTACT US

01604 494600

moulton@jacksongrundy.co.uk

www.jacksongrundy.com

1994 - 2024

HOMEGROWN

LOCAL FOR 30 YEARS



ZEUS

ELECTRICAL CONTRACTORS LTD

Professional and reliable electrical contractors serving Northamptonshire and surrounding areas.

All aspects of electrical work undertaken

- Full and part rewires
 - Electrical Installation Condition Reports
 - Additional lighting and power points
 - Lighting design
 - Fault finding & repairs
 - Maintenance contracts
 - Emergency callouts
 - EV charging points
 - Consumer unit upgrades
- ...and much more!

Domestic | Commercial | Industrial

01604 644 776

07939171437

www.zeusec.co.uk

enquiries@zeusec.co.uk



Save Money With Cloudy2Clear. Your Local Glazing Experts!

As the foremost domestic glass replacement company in the UK for more than 18 years, Cloudy2Clear Windows are the leading name in the industry. You can join over 340,000 happy customers and replace your glass ethically and affordably. If you have a failed glazing unit it may not provide you with the protection you need, or be as energy-efficient as it once was. Why not take a minute to check your home to see if any double glazing has failed? Taking action now can prevent future financial problems.

When talking to the Manager of Cloudy2Clear Northampton & Oxford Trevor Skidmore it became evident that the value of saving their customers money has been held dear for a number of years. Since buying the franchise in 2006, Trevor & Wendy now have their 2 sons Lloyd & Ross and daughter in law Lori involved along with Dan, Tom & Jo and have committed to supporting the local community by providing a service that saves the public both time and money.

The Cloudy2Clear service only requires the glass to be replaced and not the whole window once the unit has failed. Trevor commented "By doing this we make the customer considerable savings and there is much less upheaval in the family home. Also, whether communities find themselves in a financial crisis or not, saving money when you don't need to waste it is always the sensible option, and our truly family service does just that"

For a free quotation please call 0800 61 21 118 or visit www.cloudy2clear.co.uk.

“
Ask me
about our
fantastic
Energy
Saving
Glass.
”



Have Your Windows Steamed Up?

Replace the pane, not the frame!

All glazing backed by our 25 YEAR GUARANTEE	"I really liked the fact that they were a local family run business" Janet Beard	 We are a Checkatrade Member	 Get a FREE Quote
--	---	--	---

Your trusted local expert Faulty locks, handles or hinges?

cloudy 2 CLEAR Priority freephone
0800 61 21 118
www.cloudy2clear.co.uk

Glass, it's better when it's clear! 

MOULTON MINIBUS SERVICE

TRANSPORT FOR 1-16 PASSENGERS. WHEELCHAIR ACCESSIBLE



- 8 & 16 Seater Mini Buses
- Wheelchair Accessible Minibuses
- Drivers CRB checked
- Council Approved
- All Airport Transfers
- School Contracts
- Any Occasion
- Any Distance

Need A Bus, Call Us!
01604 899276
07521 087282
www.moultonminibusandcoachservice.co.uk




Swannell Builders & Property Maintenance

Est. 1980 Built on recommendation

We are an independent family run business providing a wide range of building and maintenance services, including:

- plumbing, heating, gas work & boiler servicing
- roofing
- kitchen & bathroom renovations for private and rental property

We are proud to ensure all work is completed with quality craftsmanship & friendly management across all projects.





Please contact us to chat about your project
07789 221072
rob@swannellbuilders.co.uk
www.swannellbuilders.co.uk
01604 647950





ADDERS

Accountants Limited

accountants & taxation advisers

Specialising in small and medium sized businesses

- V.A.T. Returns
- Wages and Bookkeeping Bureau
- Accounts Preparation and Support
- Business Start Ups
- Taxation Planning
- Self Assessment Returns
- Inland Revenue Investigations
- Investment, Mortgage and Will Advice Arranged
- Personal and Corporate tax planning

Tel **01604 497615**

Adders Accountants Limited,
Moulton Park Business Centre, Redhouse Road,
Moulton Park, Northampton, NN3 6AQ

For further information please see our website:
www.adders.co.uk Reg No: 07639764

T&J Plumbing and Maintenance

All aspects of property and garden maintenance:

- Plumbing (24 hour call out)
- Bathrooms
- Patios/Fencing
- Kitchens
- Painting/Decorating



Fully insured

Call Rob:

01604 757921 (eve) **07765 045148** (day)

www.tandjplumbing.net

11 Touraine Close, Duston, Northampton, NN5 6SA

ALBION CLEARANCE SERVICES

- From single items to full clearance of houses, factories, warehouses, offices, lofts and gardens etc.
- Saleable items purchased or reduced from price
- Registered Waste Carriers
- Rubbish Build Up Removed
- Light Removals



CALL STEVE FOR A FREE QUOTATION ON ...

01604 499558 07712 862242

www.albionclearance-northampton.co.uk

Gas Works

Darren Cooke
Gas and Central Heating
Service Engineer

All makes of boilers and systems serviced and repaired
combination boiler specialist
New A rated boilers installed
Powerflushing
Landlord inspections

Daytime contact: 07812 766528

Office telephone/fax: 01604 633298

E-Mail: gas.works@btinternet.com

Where the customer comes first!



British Gas Trained 25 Years Experience Local Friendly Service No call out fee

K. WORLEY (BUILDING & GARDENS)

Local family business with over 40 years professional experience in construction & garden work, including:

- Mini-digger with qualified operator available
- Driveways, blockpaving, edgings, gravelling, slabbing & patios
- Building work & repairs, footings, drainage, concreting
- Fencing, turfing, tree felling & clearance
- Dismantling & removal of garages, outbuildings, sheds, etc.
- Garden clearance including hardcore, spoil, wood, etc.
- Screened topsoil delivered
- Quality workmanship & personal service
- Full public liability insurance cover
- Waste carriers licence



For information or a FREE quote call Karl on:

m **07946 611871**

ANYTIME

h **01604 536224**

EVENING

Village Information, Events & Local News



MOULTON VILLAGE FESTIVAL 2024

Moulton Village Festival will return on May 11th – 19th 2024 with all its usual events happening; concerts, fun run, carnival, Morris dancing, bingo, May-cart procession, art exhibition, Bob Eady photograph collection and much more. We are always looking for people to organise other events during the festival period. Please contact us and let us know your ideas and plans. On Festival Saturday (18th May), the carnival parade element of the festival is a chance for everyone to march proudly through the centre of our great village and show how together we are stronger and more resilient than ever. Anybody can get involved. We are encouraging as many to start with us from Pound Lane 1.00pm-1.30pm on Festival Saturday (carnival parade sets off at 2pm) in whatever float, costume, or dancing shoes you want! Please contact barrycare024@gmail.com See full programme of events on page 46.



JOIN YOUR VILLAGE CARNIVAL PROCESSION IN 2024!

The carnival procession is the focus point of the Moulton Festival, where local businesses, groups and individuals have the freedom to complete the traditional route around the centre of the village with a large audience of spectators. Following a highly successful return last year, we are now actively looking for people to get involved and make this year's procession even greater! The possibilities are endless; turn your vehicle into a float, walk the route in fancy dress or promote your business in a creative way – whether you're a small business, school, youth group, religious group or just own a unique vehicle which you would like to show off. The route will start at the top of Pound Lane (opposite the Telegraph Pub) at 2pm and continue into the village centre, where it will follow the one-way system and complete a full loop of Church Street until heading back towards Pound Lane by around 3pm. Come and join us on Saturday 18th May 2024, meeting at the top of Pound Lane at 1.30pm. Email: contact@moultonfestival.co.uk or call Nathan on 07904 441834 to register your interest - Entry is FREE!



MOULTON VILLAGE FESTIVAL ART EXHIBITION

The Art Exhibition will be held in VILLAGE AUTOS showroom, Stocks Hill, Moulton, from Tuesday 14th - Sunday 19th May. Many thanks go to Village Autos for their continued support in providing us with such a great venue. Up to 200 original works of art will be on display and for sale, all done by local talented artists. Also, we will be showcasing 'Seas the Day' wonderful driftwood sculptures, Vince Smith's beautiful wooden creations and 'Glass by Sally and Margaret', stunning fused glass works of art. Entry to view the Exhibition will still be only 50p, children under 16 free of charge. The money collected goes to help fund our unique Village Festival.



If you would like to take part exhibiting your work, please contact Melanie Slade on 01604 647114 or email: melanie.slade@outlook.com

Melanie will provide you with all the information you need and an entry form, this must be returned by Saturday 20th April. The exhibition is only possible with help from many volunteers who take turns to do a 2 hour stint in the showroom (refreshments provided); if you could help with this please contact Celia Flowerday 07790 853263 or celiajoy@icloud.com

The Art Exhibition really is a 'must see' during Festival week, come and enjoy the fabulous talent of local art.

MOULTON FUN RUN

The Moulton Fun Run is a much-anticipated annual event in its 37th year. Taking place on Sunday 12th May, the run will cover the usual 5k (3 mile) route around the village and surrounding countryside. At the end of the run, participants will receive a well-deserved medal for their efforts with lots of all-inclusive prizes for the whole family. This year we will be taking donations for local Food Banks at the start of the race. Not keen on running? Come and cheer everybody on as a supporter or join our fantastic team of marshals who did an excellent job keeping everybody safe and smiling throughout the course last year. This year we are especially grateful to our main sponsor, Jon & Co Estate Agents. We can't wait to see you at the start line in May! See further details and registration form on the next page.



37th MOULTON FUN RUN



Sunday 12th May

- **Arrival:** 11:15-11:45am to collect your race numbers from Moulton Club, High Street, NN3 7SR
- **Start time:** 12pm
- **Entry fee:** In advance £5 per person/£15 per family. On the day £6 per person/£18 per family
- **Route:** A loop around Moulton finishing in the village gardens where you will receive a medal.
- **Prizes:** King of the Hill, Queen of the Hill, Overall winner, 1st Man, 1st Lady, 1st primary and secondary girl and boy, best fancy dress and 'In it to win it' random prize draw.
- ****NEW**** There will be a donation station at the start for local Food Banks.
- Please complete the registration form along with full payment in an envelope to the welcome desk at Moulton Community Centre, Moulton, NN3 7AX (cash only) or Vespaccino in the Public Gardens (cash or card) by Thursday 9th May.

Follow us on Facebook for regular updates: Moulton Fun Run



37th MOULTON FUN RUN ENTRY FORM

First name: _____

Last name: _____

Age on race day: _____

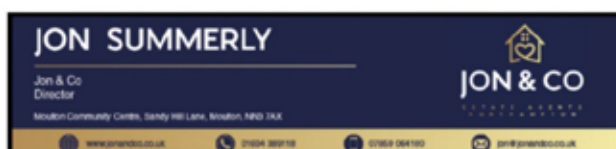
Gender: male/female (please circle)

Primary school: Secondary school:

Disclaimer: The race takes place on public roads and runners are responsible for their own health and safety. Any runner of primary school age must be accompanied at all times by a responsible adult. By checking this box I agree to the disclaimer:

Please tick if you do not want to be included in any promotional photos:

Please return the complete form to the welcome desk of Moulton Community Centre or Vespaccino in the Public Gardens by Thursday 9th May.  Moulton Fun Run.



JON & CO Estate Agents Moulton

Many people in the village have been asking if I am now Jon from Jon & Co Estate Agents. The answer is yes! After 23 successful years selling properties with Horts Estate Agents, I decided to start a new venture. I opened Jon & Co Estate Agents at the start of this year with my colleague, Jeremy Caspall, who is also a local Moulton resident. Thanks to the community's support, we are rapidly growing with some excellent local properties for sale. I am grateful for all the kind words and best wishes we have received from the community. I want to extend my heartfelt thanks to all the past and present clients who have trusted me to help with their moves. We are now looking forward to many more successful years with Jon & Co Estate Agents in Moulton."

See back page of magazine for contact details, etc.



PAWS@MCC

20TH APRIL 2024
1PM - 3PM

MOULTON COMMUNITY CENTRE
SANDY HILL, MOULTON, NN3 7AX



A fun event for you & your pooches
in our dog friendly café and library

A free puppuccino for each
pooch attending

Dog friendly menu available

A variety of dog friendly stalls

Free advice from
qualified dog experts



BINGO NIGHT

Cash Prizes!

16.05.2024

Come join us for this fun bingo night!
at Moulton Library.

£8 PER PERSON
Doors Open At 7:00pm
EYES DOWN AT 7.30PM

REFRESHMENTS WILL BE AVAILABLE FROM THE
COMMUNITY CENTRE BAR

Funds raised will go to the Moulton Festival

Tickets can be bought via the link below or from the
Moulton Library Welcome Desk
www.ticketsource.co.uk/moulton-library-health-and-wellbeing-hub

School Holidays at Moulton Library

Join us for lots of family fun at Moulton Library
during the school holidays

Check out our timetabled events each school
holiday. These are filled with lots of fun crafts,
activities, and visiting shows and performances.
Many activities are Free or heavily subsidised.



www.ticketsource.co.uk/moulton-library-health-and-wellbeing-hub

SOMETHING
PEACHY IS
COMING THIS
SUMMER...



Moulton Library has once again partnered with
White Cobra Theatre to bring a FREE open air
theatre experience to the Public Gardens of
Moulton.

This event is suitable for all the family and free to
attend.

No booking is required*



Sunday 7th July at 2pm



*In the event of bad weather, Moulton Community
Centre is reserved as back up. If the event does need
to be moved we will then be switching to ticket only
event due to the limit of numbers in the building.
For now let's keep positive for nice weather!!

PLAY EQUIPMENT SAFETY SURFACES

Over the last year, Moulton Parish Council has installed safety surfacing at most of the play areas throughout the village. Safety surfacing is a much safer surface for children than grass, which can become worn and very hard on small heads! The latest play area to be resurfaced was completed earlier this year in January at Forester Road.



NDP REVIEW

The Moulton Neighbourhood Development Plan (NDP) is 10 years old and, as such, a review is being undertaken during 2024. Moulton Parish Council's focus for the review is to include more policies relating to Climate Change. Consultations will take place throughout the year, beginning with an exhibition at the Annual Parish Meeting on Tuesday 21st May 2024. The exhibition will be in the main hall at Moulton Community Centre from 1pm – 7pm and councillors will be on hand to chat to residents. We would love to hear from our residents and would welcome your input into this revision. Below is a link to our website which will take you straight to our Neighbourhood Development Plan.



<https://www.moultonnorthants-pc.gov.uk/neighbourhood-development-plan>

**MOULTON PARISH COUNCIL
RECEIVES AWARD IN
NATIONAL SCHEME**



Moulton Parish Council has been awarded a prestigious award as part of the Local Council Award Scheme. Moulton is the first and only parish or town council in Northamptonshire to be awarded the highest level and has been accredited with 'Quality Gold' status. This achievement recognises that the council achieves good practice in governance, community engagement and council improvement. Moreover, Moulton Parish Council goes above and beyond their legal obligations, leading their communities and continuously seeking opportunities to improve and develop even further. The Local Council Award Scheme is a peer assessed programme that has been designed to both provide the tools and encouragement to those councils at the beginning of their improvement journeys, as well as promoting and recognising councils that are at the cutting edge of the sector.

The panel commented that *'overall, they were very impressed with the excellent standard of the application and highlighted the work put in by the Executive Officer and Admin Team. They were more than satisfied that all the criteria had been met and believed this council to be operating at a very good level.'*

Cllr David Aarons, Chairman, paid tribute to the Parish Team and councillors who work together to provide such a wide range of services for residents under our ever-increasing Health & Wellbeing Strategy. In terms of the future, the council is continually reviewing ways in which it can keep on improving its offer to the local community and welcomes input from local people and partners on this. A particular focus for 2024 and beyond is addressing Climate Change at local level, and we would welcome residents to join us in making Moulton a sustainable community. Moulton is at the front line of the government's localism agenda and the council are doing as much as they can to deliver services, whilst being efficient and cost-effective.

MOULTON PARISH COUNCIL ANNUAL PARISH MEETING

TO BE HELD ON TUESDAY 21st MAY 2024
at 7pm
AT MOULTON COMMUNITY CENTRE

THIS IS AN OPEN MEETING AND ALL
RESIDENTS ARE WELCOME TO ATTEND

We shall also be holding a Health & Wellbeing Day on the same day (Tuesday 21st May) from 1pm until 7pm in the main hall at Moulton Community Centre.

Our Library, Health & Wellbeing staff will be on hand to chat to you about all the events and activities you can take part in at the Community Centre. Our local groups will also be in attendance to showcase their group. Alongside the Health & Wellbeing Day will be our Neighbourhood Development Plan consultation.

Please do come along and see us.

Water Safety and Urban Drainage in Moulton

Water may look picturesque and inviting, especially on a hot sunny day, but public water courses and SuDS are dangerous and should never be used to play in!

Sites of water in Moulton

Water Courses

- Busby Meadow - Deep
- Public Gardens – Shallow

SuDS

- Forester Road
- Moorbridge Road
- Morning Star Lane
- Rose Tree Close
- Sandy Hill Lane

SuDS – what are they?

SuDS stands for Sustainable Drainage Systems. They are designed to manage stormwater, mimic natural drainage and reduce flooding and pollution.

They may be filled with water, similar to a pond or maybe look like a dry basin. They often contain reeds and other plants to help with natural drainage, pollution and to help you escape if you fall in.

Don't be fooled if they look dry – you should never play in a SuDS basin!

Top Tips - To Stay Safe Near Water

- Go together!
- Take notice of safety information and warning signs.
- Young children should always be supervised by an adult.
- Water can be colder than you expect and can cause your body to go into shock, this will affect your ability to swim, look after yourself, or rescue others. This is a key reason why many people drown.
- Learn how to swim and get trained in lifesaving and resuscitation techniques.
- You may be able to help yourself and others if you know what to do in an emergency.

NEVER enter the water to save others, look for something you can throw to help them float, a football might help, keep watching until help arrives.

Need to report something wrong with a Public Water Course or SuDs in Moulton contact us:

Moulton Community Centre – Sandy Hill
Reedings
Moulton
Northants
NN3 7AX
Telephone: 01604 642202
Email: info@moultonparishcouncil.org.uk

Useful Information

[Sustainable drainage systems | Local Government Association](#)

[Water Safety Code - RoSPA](#)

[The Water Safety Code | Royal Life Saving Society UK \(RLSS UK \)](#)

[What is the Water Safety Code? - Swim England Learn to Swim Companion \(swimming.org\)](#)



As well as our designated attenuation basins, water can gather onto other open green spaces during heavy rainfall in the winter months. The water does drain away but please take extra care, especially with small children during times of heavy rain.

Well Pump Housing Repair at Dairy Farmhouse

While I was repairing some sash windows in Moulton I was asked if I would consider repairing a water well hand pump housing at the property. It was clear that it had seen better days and needed some TLC. I tentatively agreed that I would take on the challenge, not really knowing what I was going to find (apart from the obvious rotten wood).

The housing had received previous repairs and additions, but my initial survey confirmed that all the timber was beyond repair due to the extensive rot. I wasn't yet sure why the structure was inclining but produced a cutting list for the new timbers. The present structure was a mix of Pine (Redwood) and Oak.



It was likely that the original housing would have been made only using English Oak, I decided that the best replacement would be European Oak.

Once the new timber had arrived, and having made a detailed drawing of the existing housing, it was time to dismantle it. I soon found why the structure was leaning so much, the lead pipe which goes down into the well was putting strain on the top flange and two bolts which connected it to the timber. I would need to support the pipework before I could find out why it had so much movement in it. I made a temporary 'A' frame. From this point on, I was able to see the structure underground and why the pipework was unstable.



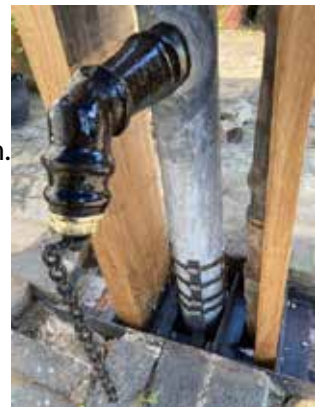
The actual well structure was four-foot (1.2mtr) diameter brick built and mostly covered by a very large and heavy flagstone (I really would have liked to lift this stone, but the cost would have been prohibitive). From ground level to the water level on that day was 4.5mtrs and the plumbed depth of water was 3.2mtrs. I could see that the pipework was originally supported by lead flanges which were welded onto the pipe and rested on oak beams set into the brickwork.

I could see three of them equally spaced from the ground level to the water level in the well. The oak beams had substantial rot and were no longer supporting the length of pipework going into the water. As I was unable to replace these supporting beams, I had to come up with a solution to support the pipework in a way that could be done overground before I could start rebuilding the housing.

I was informed that the well was maintained by Dr Campling, who would make and replace the leather washers which formed the suction seal on the plunger, drawing water up and releasing it through the spout. Apparently, his children would use it as a 'petrol pump' to fill their pedal cars. I would have liked to get the well working again but the timber rod which had the 'piston' mechanism fixed to it had rotted and fallen to the bottom of the pipework and could not be retrieved without accessing the well!

It would have been easy to just let the pipework fall into the well and just build a new housing, but I really wanted to preserve as much as I could to enable any possible future investment to revive the pump to a working condition.

My solution to support the pipework from above ground involved removing the cobbles from the opening and manufacturing a steel frame which would support the pipework and hold it vertically, I could also use this frame to secure the housing timbers to. The original timbers went down to the first beam underground which was no longer stable.



From here on I was able to proceed and build the new housing around the now secure pipework and soon it was once again vertical, weatherproof and in keeping with the original.

Mel Clarke
MJC Joinery



Have you had any projects undertaken on old buildings in Moulton recently that might be of interest to our readers? If so, please get in touch – admin@moultonparishcouncil.org.uk

Moulton Library Health & Wellbeing Hub



Rachael Warr (left) – Library Health & Wellbeing Manager

Dionne Goodluck (right) – Assistant Library Health & Wellbeing Manager

Where Warmth Meets Community: Reflecting on the Success of Our Welcoming Space

As the winter months gradually bid us farewell, we reflect on the success of our Welcoming Space initiative here at Moulton Library. Formerly known as 'Warm Hubs,' this campaign aims to ensure that our community spaces remained open and inviting throughout the coldest season.

Over the past few months, our library transformed into a haven for warmth and connection. Extended hours became a norm once again to provide everyone with a comforting space, complete with free Wi-Fi, engaging activities, mind-bending jigsaw puzzles, an extensive collection of books, and, of course, complimentary snacks and warm drinks in the evenings.

The response from our community has been overwhelming, and we are thrilled to see so many faces enjoying the library's transformed ambiance. Whether seeking solace in the pages of a good book, challenging the mind with puzzles, or simply relishing the warmth with a hot cup of tea, your presence has made our Welcoming Space truly come alive.

As the temperatures start to rise and the promise of spring whispers through the air, we want to assure you that our commitment to fostering a welcoming environment remains unwavering. The services and amenities that have become a staple of our winter initiative will persist, ensuring that our library continues to be a hub of warmth and camaraderie throughout the year.

Thank you for making our Welcoming Space a community gathering point. We look forward to sharing more stories, laughter, and connection with you in the upcoming seasons.



Storytelling Spectacle – A Year of Joy and Wonder at Our Childrens Library

This past year has seen a delightful transformation in our children's library, thanks to the creative endeavours of our newly appointed library assistants. They've introduced a new theme each week, ranging from the enchanting world of birds to the mysteries of the ocean and the wonders of winter. These themes have breathed new life into our children's activities, fostering an environment that sparks curiosity and imagination. From lively story-times that transport little ones into magical realms to interactive stay and plays that make learning a joy, our children's library has become a vibrant hub of excitement. The community response has been fantastic, with families embracing these themed activities, making our children's library a cherished and well-utilised space. We look forward to another year of inspiring young minds and creating lasting memories through the power of storytelling and play.

A Recipe for Well-being: One Breakfast at a Time

In the Autumn of last year, with the growing knowledge of how important it is to recognise the need to support men's mental health, we decided to focus on putting together a group solely for men. The lack of a common interest or hobbies can put men off joining groups and societies, so we decided to use food as the common ground; everyone enjoys a good home cooked full English breakfast. Our intention was to create a relaxed, safe, supportive space for men to come together, to share topics that are relevant to them, but without the pressure of having to start a conversation.



Once we had figured out the logistics of how we were going to run this group, we started to publicise our idea. We had a feeling it would do well but expected it to take a while to take off. However, to our surprise, the positive response was immediate and from the first week our tables were full.

Every breakfast club morning the tables are filled with chatter, laughter, advice and support, with friendships being made.

For some it has become a regular respite from caring for loved ones, for others it has become a place to connect with people after a lonely weekend, or simply a place to chill and chat over a lovely home cooked meal.

We are so pleased with how successful this club has become and we look forward to it growing in strength, whilst enhancing men's wellbeing and improving their overall quality of life.

Men's Breakfast Club runs every 1st and 3rd Monday of each Month at 10am, booking is required.

Savouring the Success of Our Community Lunch Club!

What started as a warm and hearty experiment over a year ago, has blossomed into a beloved tradition in our community - the Community Lunch Club! We are delighted to share that this heartwarming initiative has not only stood the test of time but has thrived and grown in ways we could have only dreamed of.

For just £5, our Community Lunch Club has been serving up affordable, home-cooked meals that are as delicious as they are comforting.

The culmination of 2023 brought us a Christmas Special, where we came together to share a festive feast. Ninety dinners were served, embodying the true spirit of the season. The sense of community that emanated from that day inspired us to carry the momentum into the new year.

As a testament to the overwhelming success of the Lunch Club, we were thrilled to announce that, since January, we have extended our gatherings to a weekly affair! The enthusiasm and attendance throughout 2023 have been the driving force behind this decision, and we couldn't be more excited to provide you with more opportunities to connect over a shared meal.

Join us every week for a taste of togetherness, where the flavours are rich, and the company is even richer. Let's continue to break bread and build bonds in our wonderful community.

Community Lunch Club runs every Friday at 1pm, booking is required.

Dive into the World of Books with Our Vibrant Book Clubs!

MOULTON LIBRARY BOOK CLUBS



Embark on a literary journey with our library's Book Clubs, where the love for reading takes centre stage! From a single chapter to a captivating novel with four distinct sections, our Book Club story has unfolded into a narrative of community, diversity, and shared passion for the written word.

Regular Book Club

Join fellow bibliophiles in our classic Book Club, where we select a captivating book, read it with anticipation, and come together to dissect its pages. It's the perfect forum for engaging discussions and varied perspectives. We take a laid-back approach to book club - there is no pressure to read the selected book.

Junior Book Club (Ages 9-12)

Nurture the love for reading in our younger community members with the Junior Book Club. Geared towards 9 to 12 year-olds, this club not only introduces young minds to the joy of reading but also fosters friendships through shared literary adventures.



Silent Book Club

For those who prefer a quieter reading experience, our Silent Book Club provides a low-pressure environment. Bring your own book, immerse yourself in its pages, and relish the company of fellow book lovers sharing a peaceful reading space.

Bring Your Baby Book Club

Launched in February, our newest chapter, 'Bring Your Baby,' caters to parents and caregivers. We understand the challenges of finding childcare, so why not bring your little one along? It's a relaxed setting where parents can enjoy a book club without any worries.

Whether you're unravelling the pages of a mystery novel, introducing your child to the magic of storytelling, enjoying quiet reading time, or embracing the 'Bring Your Baby' Book Club, there's a place for everyone in our literary haven.



Unleashing Creativity: 'Made by Me' Monthly Crafting Club Sparks Joy and Friendship



We've had a lovely start to our new monthly crafting club, 'Made by Me' – Social Crafting. Great fun and chatter was had by all. This friendly, inclusive crafting group meet each month to learn a new skill and make a craft item to take home. All abilities are welcome, a great opportunity to exchange knowledge, share laughter, a cup of tea and cake.

Crafting can be an incredible way to improve mental health, lower blood pressure, distract from chronic pain, combat anxiety and meet new friends.

Discover, Connect and Share: New Interest Groups at Your Library

As a Community Managed Library, we are lucky to have such a wonderful flexible space available to us. We are always interested in hearing from you about groups that you would like to see, however we do rely on volunteers to make this happen. If you have a hobby or special interest you would like to share with others, then do get in touch. Your voice matters, and we thrive on your suggestions for groups that could find a home within our library walls.



M J DIMMER
Central Heating, Plumbing & Gas
in Moulton and surrounding areas



Specialising in:
Boiler installation, servicing & repairs
Gas appliance installation & repairs
Landlord's Gas Safety Certificates
All plumbing installations



Tel: 07875 425999
Email: mjdimmer@outlook.com



Bring Me
Sunshine
PHOTOGRAPHY

Moulton Photography Studio
www.bringmesunshinephotography.co.uk
07788 423626 01604 492804
Like our Facebook page for up to date offers and information



Vickie's Cleaning &
Carpet Cleaning

WWW.VICKIESCLEANING.CO.UK
07960 281 440



Award Winning Coffee – Hot & Cold Food and Snacks – Children's Play Area

Moulton Public Gardens

Indoor and outdoor seating – Step free access – Open Tuesday - Sunday



ROB'S NURSERY

*With 41 years experience,
our success
is growing*

— *For friendly service and advice* —

BUY DIRECT FROM THE GROWER Est. 1983

With 41 years experience Robs Nursery is one of the most established Plant Nurseries in the area, supplying quality plants to the general public. Specialising in bedding plants including Geraniums, Fuchsias and most basket plants.

**** New for 2024, we have a beautiful selection of Alstroemeria ****



- * We have 100's of ready made hanging baskets or bring yours to be filled.
- * Large selection of perennials.
- * Huge range of ornamental garden pots.
- * 80/60/40 litre nursery quality compost.



Church Street Moulton Tel.495073
(between Church and Artichoke Pub)

Email: robsnursery@sky.com

www.robsnursery.com



Open 9am-5pm 7 days *(Mid April-Early July)*





Stone Well Cottage

DAY NURSERY



Celebrating 30 years

Ofsted: OUTSTANDING

3 months to 5 years

01604 492357

SHARONMORROW.CO.UK

Rapid Transformational Therapy
can help you find direction, heal
from trauma and start living life to
the fullest.

Download Your Free
Hypnosis



THE THERAPY WITH
Sharon.

hello@sharonmorrow.co.uk

Sywell Mowers

**For Sales, Servicing & Repairs
of garden machinery**

***Collection and
delivery service available***

For further details contact us on:

Telephone: 01604 642637

Mobile: 07517 662791



Rectory Farm Unit, Webbs Lane, Overstone Road, Sywell NN6 0AW



R. Osborne Plumbing & Heating MOULTON

• All types of
Gaswork and all
Plumbing and
Central Heating

• Boiler changes and
upgrades to energy efficient

• Condensing Boilers,
Boiler Servicing

• No job too big or too small

VERY RELIABLE

Mobile: 07973 818 570



✂ *A cut out & keep advert!!*

NEED A HAND? Call Kathy

07706 016934 for a FREE Quotation!

Physical help, practical tools and
creative ideas to reorganise, declutter
& change your spaces at home.

www.handycreatives.co.uk

Local NN1 . Trusted . DBS Checked

PF INTERIORS

RESHAPE YOUR HOME



All aspects of Plastering undertaken including dry-lin,
render, taping & joining.

- Studwork
- Painting & Decorating
- Tiling
- Venetian Plastering

Free quotations

- Small or Commercial works
- Fully insured.
- Email: pfinteriors91@gmail.com
- Mobile: 07970 255 337

NEW FRENCH COURSES!

Come and join our fun, interactive and social French
courses! Face to face classes starting in January.

DATE
NEW COURSES APRIL, SEPT & JAN. 1923.
TERM JOINING EVER 5.00.

PLACE
MOULTON COMMUNITY CENTRE NNS
7AX

LANGUAGEFORFUN.ORG

**JOIN NOW
CONTACT**
CHARLOTTEY@LANGUAGEFORFUN.UK
07503 186364



French for Fun

FRENCH COURSE IN A DAY

French for Fun

We start with the basics - a, b, c and 1, 2, 3 -
but build up quickly to short conversations
based on your real life by the end of the day.
Suitable for those who like to cram or who
don't want a regular ongoing weekly
commitment.



DATE
SATURDAY 11TH MAY
8:30 - 4:30

PLACE
MOULTON NNS

COST
£120 INCLUDING
REFRESHMENTS AND COURSE
MATERIALS

LANGUAGEFORFUN.ORG

**RESERVE YOUR SPACE NOW
CONTACT**
CHARLOTTEY@LANGUAGEFORFUN.UK
07503 186364





MOULTON LIBRARY

HEALTH AND WELLBEING HUB

VOLUNTEER SCHEME

Have some free time?

Interested in volunteering?

We are always looking for new volunteers - if you have time and think you have skills that could help us then please get in touch.

Moulton Library
Moulton Community Centre
Sandy Hill, Reedings, Moulton, NN3 7AX

 @MoultonLibraryHub

 01604 642202

 moultonnorthants-pc.gov.uk



Schools & Colleges



MOULTON COLLEGE

Corrie Harris - Principal & CEO

Growth and sustainability for the future

It is with great pleasure that I can update you on another successful start to our 2023/24 academic year at Moulton College. I am delighted to report that we saw a third consecutive year of growth in student numbers at the College this year. What is most pleasing is that this growth is occurring across our curriculum offer in subjects as diverse as agriculture, stonemasonry and sport!



To ensure that we can provide all our students with the best possible experience, we are in the process of updating our IT infrastructure and investing in new plant equipment for our farm, thanks to funding from the Local Skills Industry Fund.

Work is also due to start on our new £1.6M Construction Science & Technology Hub project which will transform an existing building to create an enhanced industry standard learning environment, including a construction lab, a digital technology lab, science lab and technical drawing space.

As a proud land-based college we have always been very mindful of our role in protecting our environment. However, the time has never been more pressing for us to train and equip our students and staff with the tools they need to behave in a sustainable manner as well as learn skills and techniques that will see them able to work in the emerging green skills sector.

Recently we were the first college nationally to deliver a Solar Power Installer Fundamentals course, developed with low carbon energy generation firm GenCarbon. As a result of this course several local job seekers have now secured full-time employment with GenCarbon – an excellent example of how colleges can have a significant impact on filling skills gaps in these critical sectors.

Thank you for your continued support of the College, we are extremely proud to be a part of your community.

Hanging Basket Donations

If you are interested in making a donation towards the Village Hanging Baskets, please complete the donation slip below and return to Moulton Parish Council by Friday 3rd May 2024. The names of those who have donated will be placed underneath each basket, but if you have a specific wording request or would prefer that your basket was not named, please let us know.



Name of Business/Group/Resident:

Name for Plaque: (or other wording required)

Amount: (available from £25 per basket for individuals and £50 per basket for village groups/businesses):

(please circle amount) **£25** / **£50** / **£75** / **£100**

Please return slip & cheque payment (made payable to **MOULTON PARISH COUNCIL**) to:

Moulton Parish Council, Moulton Community Centre - Sandy Hill, Reedings, Moulton, Northants, NN3 7AX

Alternatively, payment can be made by BACS to Sort Code 20-61-51 Account Number 00096024.

Every Wednesday
Booking Required




MEET, GREET & Move Your Feet

A class that lets you exercise and socialise in one!

Fancy a little exercise with a relaxing cuppa and a natter beforehand followed by a light lunch after? Simple stretches, dance & exercises set to music. Class adapted to meet individual needs. If mobility is limited the class can be taken on a chair. All ages welcome.

A GREAT WAY TO HAVE FUN AND MAKE FRIENDSHIPS.

WEDNESDAYS 10.30AM - 12.30PM

MOULTON LIBRARY

COST £5

Join us from 10.30am for a hot drink and a chance to chat. Exercise will commence from 11.15am for 45 minutes followed by homemade soup and warm rolls. CALL 01604 642202 (RACHAEL & DIONNE) TO RESERVE YOUR PLACE




Cuppa Connections at Chappell House

free!

Come & Join us for a cuppa, cake & company, every 4th Monday of the month 1pm to 2.30pm at Chappell House Lounge.

This is hosted by Dionne, from the Moulton Library Health & Wellbeing hub. This is a Drop-In session, if you require further information please call 01604 642202





Steve Hemmings
I.T Support Technician
steve@hemmingsit.co.uk
07837 004540



Hemmings I.T

Moulton, Northampton
For a friendly, personal service...

PC Support/Troubleshooting/Repairs/Solutions/Sales

- Virus and malware removal
- System security
- Laptop screen, keyboard and charger replacements
- MS Windows issues and setup
- General troubleshooting
- Startup issues
- Internet and email issues
- WIFI and network setup and troubleshooting
- And more

07837 004540



Spinney Hill Plumbing

- NVQ qualified plumber with over 15 years experience
- Efficient, friendly and reliable
- Outside taps
- Tiling
- Bathroom and kitchen refurbishments

For a competitive **FREE** quote phone Jon Quigley:

07973 119 961

e: spinneyhillplumbing@yahoo.co.uk

ASGS GARDEN SERVICES



- Hedges trimmed/reduced
- Tree pruning and removal
- Low maintenance landscaped borders
- Regular Lawn mowing
- Garden clearance and waste removal
- Pressure washing service
- Driveways, patios and paths cleaned
- Block paving re-sanded
- Fence installation
- Domestic and Commercial maintenance

Call Gavin:

Mobile: 07387905161 Office: (01604) 644011

Fully Insured allsgs@outlook.com Waste Carriers Licence





RECHARGE • RELAX • RECONNECT

OPEN MONDAY - SUNDAY

MONDAY - FRIDAY 8.30AM - 4.30PM

SATURDAY 9AM - 4PM

SUNDAY 9AM - 1PM

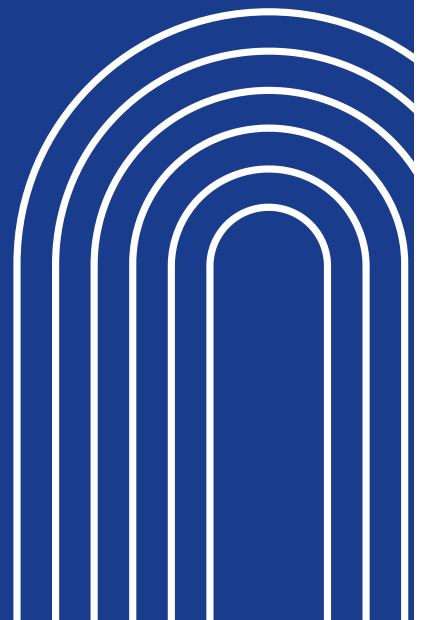
**HOMEMADE CAKES
FULL BREAKFAST MENU
DAILY SPECIALS
SCHOOL HOLIDAY ACTIVITIES**

**KEEP UP TO DATE WITH OPENING
HOURS, MENU AND SPECIALS -
FOLLOW US ON SOCIAL MEDIA**

 @EATATMCC

FREE WIFI & PARKING

**VISIT US AT
MOULTON COMMUNITY CENTRE
SANDY HILL, REEDINGS,
MOULTON, NN3 7AX**



the Style Xchange

Unisex Salon

Specialists in Cutting, Colour & Perming

Tel: 01604 491719

4 High Street, Moulton,
Northampton NN3 7SR

GARDEN & HANDYMAN SERVICES!

- ✓ Hedges Trimmed, Lawns Cut & Tidy Up
- ✓ Shed & Fence Repairs and Maintenance
- ✓ Driveway and Patio Jet Washing
- ✓ Gutter & Conservatory Roof Cleaning
- ✓ Water Butts Fitted

Call Mark on - 07514 665306 / 01604 456818

MICHAEL PALMER
Carpentry

For all types of carpentry including doors, windows, kitchens, flooring and repair work.

For a FREE quotation
T: 01604 643429
M: 07941 522718
 9 HARVEY LANE, MOULTON

Take the stress out of dealing with your accounts

BR Bamford Chartered Accountants offer a professional, cost-effective and friendly service. Based in Pitsford, we work with small and medium sized businesses in various sectors. With jargon-free advice, we'll help arrange your accounts in the easiest, most efficient way possible.

- Accounts Preparation
- Corporate Tax
- Personal Tax
- VAT
- Company Services
- Payroll & Bookkeeping

enquiries@brbamford.co.uk
01604 881 662
brbamford.co.uk

BR Bamford
CHARTERED ACCOUNTANTS

Free initial consultation for all new clients

VILLAGE AUTOS
Stocks Hill, Moulton NN3 7TB

MOT tests while you wait
(please ring or call for an appointment)

Servicing & repairs to all makes of petrol & diesel cars & light goods vehicles

Opening hours:
8.30-5.30 Mon-Fri. 8.30-12.30 Sat.
Closed Sunday.

15% discount on all labour charges to Moulton residents.

FREE VEHICLE COLLECTION SERVICE IN MOULTON AREA.

FREE LOAN/COURTESY CARS AVAILABLE

Call us on
01604 790020

The best in Vehicle and Customer Service!



Ideally suited for parties, meetings, training courses, social events, etc.

Rooms to hire - Ground floor: main hall and small hall (additional spaces available to hire in the evening - library and café space). First floor: two function rooms, one meeting room and a small kitchen.

The main hall and the small hall can be joined together for larger events.

Staffed bar available with hall hire.

Pre-school, café and library on site.

All larger rooms are equipped with tables, chairs, PA system, lectern, flip chart and 4K 86" interactive presentation screens. Staging and sound equipment available on request at an additional charge.

Fully equipped kitchen with catering size stove and oven.

Complete range of catering packages available - drink trolleys, buffet lunches and sit down meals.

Lift available to first floor rooms.

Large car park with 100 spaces.

All function rooms fully air-conditioned.

www.moultonnorthants-pc.gov.uk | bookings@moultonparishcouncil.org.uk

Find us on Facebook: Moulton Community Centre

Bookings Tel: 07484 517086

Afternoon Tea



Traditional Afternoon Tea served on vintage china

Sweet and savoury treats

Available Monday - Saturday. Advance bookings only



Moulton Community Centre
Sandy Hill, Reedings
Moulton, NN3 7AX

EAT@MOULTONPARISHCOUNCIL.ORG.UK

[@EATATMCC](https://www.facebook.com/eatatmcc) [@01604 499597](https://www.instagram.com/eatatmcc)



DID YOU KNOW?

That we offer hot and cold catering packages for all types of events, of all sizes?

From training and meetings to parties and celebrations; we can cover everything, including any dietary requirements.

Please contact bookings@moultonparishcouncil.org.uk for a personalised quote or check the website for menus.



www.moultonnorthants-pc.gov.uk : 01604 642202

Village Clubs & Societies



MOULTON FOOTBALL CLUB

Steve Alibone
stevealibone@yahoo.com

The Magpies kicked off the new campaign with high hopes after a successful first season at step 6 level in 2022-23, and the management team set what they considered to be a realistic target of finishing in the top 5 in the Division.



Sadly, at all levels of football, players come and go and a number of last season's squad moved on during the close season, notably JJ McCarthey who scored the equaliser in the Junior Cup final and top scorer Joey Evans who to be fair turned down many offers during the season but when bigger fish came calling in the summer he moved up a level joining Real Bedford.

The management team were quick to replace those who had left, and we welcomed Josh Adams, Dan White, Dan Camacho Justin Mensah, Nat Ansu and later Aaron Dickins, Josh Durrant and Archie Elmore to the fold.

Sadly tragedy struck after only 30 mins of the opening game, when Alex Lowery sustained a season ending injury, and that was followed in late September when Dan Camacho ruptured an Achilles in training and that also ended his season as well.

If that wasn't bad enough, keeper Filipe Mederios then broke a bone in his foot in mid-October and that has ruled him out of a number of games as well.

Despite these setbacks and at time of compiling this report in early January, the team had strung together a winning run of ten consecutive games and only one defeat in 17 league and cup matches stretching back to early September, leaving us lying second in the league and still in 3 cup competitions.

The brand and quality of football has not gone unnoticed in the village and 3 times in consecutive games we broke our attendance record, which currently stands at 256 set in the game against Royston Town U23, ironically our last defeat in any competition.

There have been some management changes, with Phil Parks taking over management of the reserves and Steve Wood likewise with the Under 18s, with a remit to try and advance some of the younger players towards first team football and a number of them have been training with the senior squad during the latter end of 2023.

The club continues to foster and support a Ladies Team as well as the Magpies Minis for 5 years and upwards through to Under 18s as well as a still thriving Walking Football group who meet 3 times a week.

Off the field a hard-working committee of volunteers strive to improve the facilities with a number planned for 2024 and beyond.

With any amateur club such as ours, we are indebted to our many, many sponsors and advertisers who spend some of their hard-earned money to support the club and allow us to do what we do, and we thank them very much for their valued contributions.

On that note, if you are a local business or you know of someone who might like to get involved and have exposure to approximately 1000 people a week, we have a number of packages available. Please feel free to give Steve Alibone a call on 07791 621078 or email stevealibone@yahoo.com for further details.

Finally, we would like to thank our hardy band of supporters who are at all the home games and some away as well; you too help the club so much and for that we are truly grateful. If you haven't been to Brunting Road yet, please pop up and watch a game. There is usually a game every Saturday and all matches are advertised on our social media platforms.



MOULTON MORRIS MEN

This year has been a particularly tough year for Moulton Morris. In September we lost a long serving team member, Gareth Turner, after a long battle with cancer. However, the team have supported each other, and Gareth's family, and we know that Gareth would have wanted us to get on with it.



As always, we are looking for new members, and would welcome boys and men from age 8 upwards. Please come and find us at Moulton Primary School Hall on Thursday evenings at 7.30pm.

It is a great way to keep fit and have fun at the same time. Plus, it is a great environment to maintain your mental health and general well-being.

We dance at many events across the UK, including major festivals. Where else can you find a fun hobby that costs you nothing!!!

Come and help keep the tradition alive.

Contact Simon Care for more details
simoncaremusic@icloud.com - 07788 755756

HARDY PLANT SOCIETY NORTHAMPTONSHIRE GROUP



All meetings are usually held on the first Saturday of the month (except for July and August) at Moulton Community Centre, starting at 2pm (see programme and dates below). Join us for £25 per head - Visitors £5


02.03.24	Illustrated Talk by Rosemary Buisseret - 'The Night Scented Garden'
06.04.24	Illustrated Talk by Steven Edney - 'Think Beyond the Flower - Perennials for Winter Structure and Seed Heads'
04.05.24	Illustrated Talk by Robin Pearce - 'Crazy Daisies - Exploring the World of Daisy-Like Flowers'
01.06.24	Illustrated Talk by Neil Timm - 'Astride the Fence - Wild Flowers in the Garden - Garden Escapes in the Wild'
07.09.24	Illustrated Talk by Ingrid Millington - 'Plant Hunting Holiday'



Library to you

Library to You is a free service for library users who are housebound and are unable to visit a library. Library Volunteers will deliver & collect books / audio books to and from your home every month.

For more information please contact Moulton Library Welcome Desk 01604 642202





Moulton Library Health & Wellbeing Hub

Our library is a welcoming space that all are welcome to come and enjoy. If you are in need of any additional support then please speak with Rachael or Dionne at the welcome desk.

Monday - Friday	9:00 am - 5:00 pm
Saturday	9:00 am - 4:00 pm
Sunday	9:00 am - 4:00 pm

Moulton Community Centre, Sandy Hill, Reedings, Moulton, NN3 7AX
01604 642202
moultoncm1@gmail.com



WHITE TIGER TAE KWON-DO

Train at your local martial arts club here in the village, established here in Moulton since 1992, with Chief Instructor, Master Adrian Gent, to 7th Degree Black Belt.



White Tiger Tae Kwon-Do practices original Chang-Hon Blue Cottage style developed by General Choi Hong Hi. It's great to see so many new members at the beginning of 2024, starting their Tae Kwon-Do journey. The club is celebrating 31 years in Moulton. We are part of NAKMAS (National Associate Karate and Martial Arts Schools) the country's largest independent governing body. Benefits of Tae Kwon-Do: We offer practical, effective self-defence, developing confidence and fitness, tournaments etc.

Classes Available on:

Mondays at The Guide Hall, Barlow Lane, Moulton, NN3 7SZ
10am-11am Home Education Group

Tuesdays at The Guide Hall, Barlow Lane, Moulton, NN3 7SZ
7pm-8pm Beginners up to Green Belt
8pm-9pm Green Belt upwards (Senior Training)

Fridays at The Village Hall, Pound Lane, Moulton, NN3 7SD
7pm-8pm All Grades

If you're interested, please call 07929 636 773 for further details.

As the village is expanding and there are many new people moving into the area, you are more than welcome to come and join us. The first three introductory lessons are free. From 6 years + upwards. For more information contact: 07929 636 773 / tiger-gent19@hotmail.com

For all the latest news, visit our website: whitetigertaekwon-do.co.uk/ - website created by local village design company Jweb Creative: jwebcreative.co.uk/

TUESDAY CLUB

Our monthly meetings are held in the Guide Hall on the 4th Tuesday of the month (2pm - 4pm). Everyone is welcome, so please come along and enjoy an afternoon for £3, which includes tea/coffee, biscuits and a raffle. The speakers for 2024 are as follows:

- March 26th - A talk from The Good Loaf, Northampton
- April 23rd - Sue Botterill - Adventures with a Small "a"
- May 28th - Rob Kendall - Pastimes That Kept Northampton Entertained Through the Years
- June 25th - Sue Jackson - The Day I Met Diana
- July 23rd - Steve Dimmer - "Grumpy Old Men"
- Aug 27th - Kate Wills - Northamptonshire Royal Connections
- Sep 24th - TBA
- Oct 22nd - Ray & Jenny Rowson - The Danube & Prague
- Nov 26th - Chris Bazeley - "The Privy"

MOULTON THEATRE

Another year, another great line-up of theatre at your local venue for great dramas and comedy! At the time of writing, we're in the throes of rehearsing our March play, the classic, twisty-turny thriller, *Deathtrap* by Ira Levin.

Our following production will be the courtroom drama, *Anatomy of a Murder* by Elihu Winer (13th-18th May) based on the book and real-life experiences of Robert Traver. *Anatomy* is a fierce and uncompromising look at the American legal system. Defeated for re-election as District Attorney, Paul Biegler isn't looking forward to becoming a defence attorney, but his first case is sensational.



A lieutenant is accused of murdering the bartender who allegedly raped his wife. It's a high stakes battle of wit and determination, as Biegler uses every device to save the officer's neck.

The ever-popular *The Importance of Being Earnest* by Oscar Wilde (15th-20th July) needs no introduction: Come along for a night of glorious comedy and Wilde's typical wit and trademark barbed repartee.

Our cinema shows a variety of films and we always welcome suggestions from our audiences. Missed a film at the cinema recently, then pop along to Moulton Theatre and you can watch in the comfort of our auditorium.

For further information about film screenings, upcoming plays and auditions then visit our website at www.moultontheatre.com

The theatre opens for coffee every Saturday from 10am to 12pm, so come inside and enjoy the surroundings of our lovely theatre building. Moulton Players is a registered charity, run entirely by volunteers, and we always look to welcome new members.



There are so many opportunities to help with the running and operations of the theatre. We value all our volunteer helpers; if you could contribute a little time then please contact us (membsec.mp@gmail.com) or come speak with us at the theatre.





Community Larder Moulton

Tackling hardship in the community

Venue:

Moulton Community Centre - Sandy Hill, Reedings, Moulton, Northants,
NN3 7AX

Please see our social media for opening times:
www.facebook.com/moultoncommunitylarder

We operate a membership programme that provides access to groceries at heavily discounted rates and is aimed at tackling hardship in the community.

How it works

Complete a membership form, pay the joining fee and you can then shop at our larder once a week.

What does it cost?

Annual Joining Fee: £10 per membership

Up to 10 items per session for £5

Up to 22 items per session for £10

Your membership includes FREE fruit, veg and bread in addition to your items (subject to availability)

How do I pay?

You can pay on the day by cash or card.

Please contact us for further details on:

01604 642202 or community@moultonparishcouncil.org.uk



MOULTON LIBRARY
HEALTH & WELLBEING HUB

Moulton Community Charitable Incorporated Organisation (CIO) Registered Charity Number 1195121



MOULTON
PARISH COUNCIL

Rachel Vallance – Secretary
secretary.moultongardeners@gmail.com



Spring has arrived, with summer not far behind. Lighter evenings and warmer weather mean that we can get outside to enjoy our gardens to the full. Gardeners are preparing the soil for summer plants, or planting seeds and potting up in the greenhouse, with a view to relaxing with a glass in hand to admire the fruits of their labours!

From March to August the Society has a variety of meetings, trips and events planned (see below).

One of our major events, the Plant Sale and Coffee Morning, is being held on Saturday 11th May in the Community Centre from 10.30am - 12.00pm. Everyone is welcome to come along and stock up on seedlings, young plants and perennials for their summer displays and to enjoy a cup of tea or coffee and delicious home-made cake.

Another not-to-be-missed event is our Annual Show on Saturday August 10th in the Community Centre. Society members will be showing off their skills in home-grown fruit, vegetables, flowers, home baking and preserves. Everyone is welcome to come along and enjoy the displays and partake of some refreshments from 2.00pm - 3.30pm.

Meetings are held in the Community Centre at 7.30 pm on the 4th Wednesday of the month (except June, August and December), and we always look forward to meeting new members.

Meetings

March 27 th	Garden Quiz & Hot Cross Buns
April 24 th	'Chrysanthemums'
May 22 nd	'The Swiss Garden, Shuttleworth, Bedfordshire'
July 24 th	'A Concise History of our Great British Parks'

Trips

April 30 th	Coton Manor (Bluebells & Refreshments)
June 12 th	Drive-yourself Daytime Trip to Cottesbrooke
June 23 rd	Weekend Away to Hayling Island
July 17 th	The Swiss Garden, Shuttleworth

Events

May 11 th	Plant Sale & Coffee Morning 10.30am - 12pm
August 10 th	Annual Show 2.00pm - 3.30pm



Our Moulton WI is one of the largest in the county. Renewal of membership is currently underway, and we look forward to welcoming new members over the coming weeks and months. Our WI meetings take place on the second Tuesday of each month. We start arriving from 19.00, but our meetings do not officially start until 19.30. That extra thirty minutes gives our members yet another opportunity to catch up and book on a variety of activities. The age of our members varies greatly, which makes it a very special WI as everyone has something to give.

At the time of writing, as January gets under way, our interest groups are keen to get going again. Our groups include: - Book Club, Skittles, Craft Club and Walking Netball (yes walking, which is not as easy as you might think).

We are also great at organising fund-raising events. Our next fund-raising event will take place on 8th March 2024, at Moulton Club and will be to raise money for 'Baby Basics' (tables are still available). Of course, we also love to bake and some of our members recently donated several beautiful homemade cakes to Cynthia Spencer. This is an annual baking event which we are proud to support.

We also arrange many varied events, the most recent ones include Nottingham Christmas Market, a tour of Northampton University, a trip to the Northampton Museum and in April 'The Life of Pi' at the Royal & Derngate.

If you would like to know more about the Moulton Evening WI, please pop along to one of our monthly meetings, you would be most welcome.

If you would like any information on any of the above, please contact: -

Carolyn Bennett (President) on: 07939 223158
Beverley Jeyes (Membership Secretary) on: 07935 445895

Rural News

PARISH FOOTPATH WARDEN & JOINT HEALTH WALK LEADER

Brian Walton

Autumn was very disappointing; the sloes and the blackberries were not the usual standard. The blackberries were early due to wet Spring and the sloes were very sparse and small, but I am hoping my sloe gin turns out all right! As I write this we are going through a cold spell, and when we had a bad storm the brook in Busby's Meadow overflowed to the extent that the bridge was submerged; but, as we hope things get better, remember the old saying "rain before seven, fine after eleven" and very often it is true. So, in the fine weather a nice walk is to go along Boughton Road past the reed beds and go into Forester Road and then take a sharp left and follow the footpath in a big circle, you will see countryside which will make you feel relaxed.

If you like to walk leisurely and you like to talk too, you can do both at the same time! Come and join the Moulton Health Walk every Wednesday, meeting in High Street at the bottom of Doves Lane at 10.30am; come and have a walk and go for coffee after.

In the meantime, keep walking as you will see more.



B Brixworth
LEGAL



5 REASONS WHY YOUR LOCAL FIRM SHOULD LOOK AFTER THE LEGAL BIT...

- ✓ You get a personal contact dealing with your transaction.
- ✓ We will agree a fee upfront so you are not surprised by hidden costs.
- ✓ Our friendly approach means clients stay and come back more.
- ✓ We keep you in the loop as to what is happening, not wait till you call us.
- ✓ Being a small practice means we have to be agile and care, so you get the right person NOT the most junior person.

CONTACT US NOW:



01604 973976



www.brixworthlegal.co.uk

Brixworth Legal is the trading name of Brixworth Legal Limited

**WHEN BUYING OR SELLING A
HOUSE YOU FOCUS ON THE HOUSE
AND WE WILL LOOK AFTER THE
LEGALS
FOR YOU**

Community Lunch Club



Come hungry, leave happy! Join us for a delightful Friday afternoon at Community Lunch Club. Let's share not just a meal but moments that matter.

When: Every Friday

Time: 1:00 PM

Cost: £5 per person

Why Attend?

- Forge new friendships and strengthen community bonds.
- Relish the joy of sharing a meal in good company.
- Experience the warmth of a welcoming and inclusive environment.

Who Can Attend?

Everyone is welcome! Whether you're a resident, a professional, or a visitor, our Community Lunch Club is a space for all to come together, enjoy a delicious meal, and connect with others.

Where: Moulton Library, NN3 7AX

Your £5 Contribution Includes:

- A scrumptious home-cooked meal
- A seat at our communal table
- The opportunity to make lasting connections

Booking Essential -

- Visit the welcome desk to book in person or
- Call 01604 642202 or
- Email - community@moultonparishcouncil.org.uk

MOULTON CAR SCHEME

VOLUNTEER DRIVERS NEEDED

Do you enjoy driving?
Do you enjoy helping people?
Do you have any spare time?

We need drivers to help people with their transport needs.
Drivers take people to and from their home in Moulton to medical appointments in Northampton.
Passengers pay a fee to the driver to cover fuel costs.



Interested? Contact us for more info;

 01604 642202

 community@moultonparishcouncil.org.uk

 @Moultonlibraryhub


 @Moultonlibrary

 @Moulton Connect



John Bland
 Tree Surgery and Felling
 Quality Hedge Trimming,
 Shaping, Reducing Shrubs & Conifers
 Wood-chip Mulch Supplied
 All debris removed
 Site left tidy, Fully insured
 For a reliable friendly service ring

Northampton
01604 494330
 Email: info@johnblandtreework.co.uk
 7 North Leys Court, Moulton Leys, Northampton



MJC Joinery
Moulton

OVER 40 YEARS EXPERIENCE

- Conservation care & repair
- Locks & ironmongery repair/replacement
- Sash window servicing
- and much more

To discuss your requirements please contact Mel Clarke

E: mel.clarke42@gmail.com
 T: 01604 493302
 M: 07966 532143/07751 481082



NJM LOCKSMITHS
NJM Your Local Independent Locksmith

Tel: 01604 404580
 Mob: 07966 639108



- Entry Specialist, Commercial & Domestic
- Emergency Call Out
- Key Cutting • CRB Checked
- All Insurance Work Completed to BS Standards

Major Credit Cards Accepted



ANDERSON CARPETS AND HOME
 For all your flooring needs

Free Quotes

Visit our showroom at:
 Unit 5a Grove Farm,
 Grove Farm Lane, Moulton, NN3 7TG

Or call 01604 491744 07836677832
 Email: info@anderson-carpets.co.uk
 Web: www.anderson-carpets.co.uk

The Poplars
www.thepoplarshotel.com




Find us on Facebook




The best rates are only on our website - www.thepoplarshotel.com

A charming stone built property built over 300 years ago. The Poplars has an excellent reputation and provides a high level of service, in a traditional relaxing environment. There is a wide range of bedroom types to suit all budgets. Private parking and free wi-fi in all areas.

Breakfast is available for non-residents at weekends. Reservations are essential, please call or email to book.
 Tel: 01604 643983

Email: info@thepoplarshotel.com
 Cross Street | Moulton | Northampton NN3 7RZ

1st Call
SPARKLE
CLEANING SERVICES

Professional Carpet & Upholstery Cleaning Services for 22 Years

- Fast Drying
- Oriental Rugs - Colour Beautifully Restored
- Stain & Odour Removal
- Carpets Fitted & Relocated
- Carpet & Fabric Protection Applied
- Leather Suites Cleaned



Call Phil Davies for a FREE Quote
01604 499077
 Mobile: 07811 843360
 27 Ibstock Close, Billing Lane, Northampton NN3 5DL

Website: www.sparkle-cleaning.co.uk

Professional Tuition in Maths & English



Kip McGrath's qualified teachers create individual tutoring programmes, using proven Kip McGrath methods.

- ✓ Maths ✓ Reading
- ✓ English ✓ Spelling
- ✓ Comprehension

Call today for a **FREE** assessment

Northampton North
01604 790844

northamptonnorth@kip-mcgrath.com
kipmcgrath.co.uk/northamptonnorth

Kip McGrath
EDUCATION CENTRES
Moulton Park



Moulton Autocare



Proprietor: Terry Smith M.I.M.I.

Sandy Hill Lane, Overstone Road, Moulton
MOT Testing - Repairs - Servicing

**Tyres - Exhausts - Batteries
Shock Absorbers - Brakes
Clutches Supplied & Fitted**

MOTORCYCLE MOT TESTING

Why waste your valuable free time going into town when we can cater for all your motoring needs on your doorstep!

FREE LOCAL COLLECTION AND DELIVERY SERVICE

For Professional Assurance

**Telephone 01604 499565
Mobile 07973 956368**

REDRUP

ELECTRICAL SERVICES LTD

All electrical installations and servicing on industrial, commercial and domestic premises.

- Lighting, Design and Advice
- Data & Communications
- Planned Maintenance & Servicing
- Garden and Outdoor Lighting and Electrics
- EV Charging
- Test & Inspection

Call: **01604 492896**

or

Email: **info@redrupelectrical.co.uk**

Unit 5 Grove Farm, Grove Farm Lane, Moulton, NN3 7TG



Call now for your free, no obligation quote
07551 461 733



AJ Block Paving prides itself on paving the way in quality drives, paths and patios at competitive prices.

We offer a full service, from design, through to installation.



Block Paving • Driveways • Patios •
Fencing • Sleepers • Artificial Grass • Landscaping

info@ajblockpaving.com

Men's Monday Breakfast Club

Come & Join us for a Full English Breakfast with tea & toast, in a relaxed and friendly community space.
Every 1st & 3rd Monday of the month.
10am to 11.30am.

£5 per person. Booking is Required. To book your place or for further information please use the link below or call Dionne or Rachael on 01604 642202. Moulton Community Centre NN3 7AX

www.ticketsource.co.uk/moulton-library-health-and-wellbeing-hub



Women's Tuesday Breakfast Club

Come & Join us for a Full English Breakfast with tea & toast, in a relaxed and friendly community space.
Every 1st & 3rd Tuesday of the month.
10am to 11.30am.

£5 per person. Booking is Required. To book your place or for further information please use the link below or call Dionne or Rachael on 01604 642202. Moulton Community Centre NN3 7AX

www.ticketsource.co.uk/moulton-library-health-and-wellbeing-hub



Mini Masters Art Club

A children's fun art club - Each class the children get to experience & learn a new art/craft.
2nd & 4th Thursday of each month
4pm - 5.15pm

Suitable for children 8yr to 12yrs

£2.50 Per Child per class
All resources included

Moulton Community Centre
NN3 7AX



Booking required for each class -
www.ticketsource.co.uk/moulton-library-health-and-wellbeing-hub

Made by Me Social Crafting

Every 1st Sunday of each Month 2pm - 4pm
£5 Refreshments and equipment included

Join our friendly crafting sessions, where each month we learn a new skill and make a craft item to take home.

Alternatively you can bring along your own project to work on.

This is a relaxed inclusive community group; a judgment free space for all abilities to exchange knowledge, share laughter, a cup of tea and cake.

Crafting can be an incredible way to improve mental health, can lower blood pressure, distract from chronic pain and combat anxiety



Booking is preferred so we have an idea of numbers attending, but drop-ins are welcome. please use the link below or drop by the Library Welcome Desk.
www.ticketsource.co.uk/moulton-library-health-and-wellbeing-hub

MOULTON LIBRARY BOOK CLUBS



Are you an avid reader, looking to make some bookish friends or have a young bookworm on your hands?

Moulton Book Club consists of four chapters - there's something for every book lover! Explore our chapters below. All of our book clubs are free to join!

MOULTON BOOK CLUB

7pm - 9pm
Select Dates

Share what you have been enjoying in a safe space with others who share the same love of reading. A book is chosen each month to read and discuss together - but all are welcome - no pressure!

SILENT BOOK CLUB

5pm - 7pm
Select Dates

Find the standard book club set up a little intimidating? Bring your current read along to silent book club! An evening of sweet treats, relaxed chats and dedicated reading time

BRING YOUR BABY BOOK CLUB

1pm - 2pm
Third Thursday of the month

Suitable for all parents/carers, BYB book club is a book club for adults where you can bring along your child. Age appropriate toys will be available, the perfect place to connect with other adults in a friendly and supportive setting. Bring Your Baby Book Club is free to join.

JUNIOR BOOK CLUB

4pm - 5pm
First Monday of the Month

Suitable for ages 9 - 11, encourage a love of reading early! With book reviews, a healthy snack and a chosen book to read each month, like all our chapters Junior Book Club is free to join.





MOULTON PARISH CHURCH



At the Parish Church we are giving thanks for a really blessed Autumn. In October we celebrated Harvest with a service and annual auction to raise money for a school that we are linked with in a remote part of Ghana. November saw Remembrance Sunday marked with both the usual service in church and the now regular (but rather soggy this year) fixture of an outdoor Act of Remembrance in the Public Gardens. December saw a packed run up to Christmas with Christingles, activities for all ages from tots to seniors and various carol events, including the second open air carol service outside Village Autos (pictured). The weather was not great in the run up, but just shy of 300 people turned up to sing carols, hear the good news of Christmas and be showered with some unexpected 'snow'!



In the New Year, as well as running and developing our regular community events - Lunch Club, Tots and ReNew Wellbeing Cafe, our attention is turning to finding a replacement for our much-loved Children and Families worker, Nick Lambert, and a new Associate Vicar.



All are very welcome to join us at MPC and we hope to see you soon!

CAREY BAPTIST CHURCH

Angela Campling - Publicity Officer - 01604 644280



Although our Minister, Rev. Stuart Dennis, left us for pastures new last April, the church is still going strong with morning services - with the help of our Moderator (or acting minister), Rev. Peter Strong, and the great support of our deacons, church members and by a number of lay people, mainly from other Baptist churches and some retired ministers. We are very grateful for the support we are getting from local churches. An 'interregnum' can be a time when the church is strengthened by having to rely on its own resources, enabling members to take a greater part. We are grateful that our super secretary, Martin Burton, has temporarily come out of retirement to 'hold the reins'.

Activities continue as usual - both the Brigades are flourishing and Cuppa@Carey on Mondays, between 2:30pm and 4pm, has become a pleasant meeting place for all ages - new friends are being made and coffee, tea and cake lubricate the conversation!

The Macmillan Tea Party, in aid of cancer care, which was hosted by Carey in September, raised an amazing £354.50! So many thanks to all who helped and all who came and contributed.

We look forward to welcoming a new minister in due course, after the usual process is complete. Our door to our warm, comfortable church is always open on Sunday mornings and there's a welcome on the mat!



Obituaries



Christabel BANDY (nee Day) sadly passed away last year in July 2023, aged 87 after a short illness. Christabel resided at Chappell House for her last 20 years or so. Christabel, also known as Chris, was born in Moulton on the 18th of March 1936 to Kate Day and lived in Binions Yard, which was at

the back of the now West Street Garage. Christabel had an older brother, Derek Day, who passed away recently and a younger sister, Pauline, who is her remaining sibling. Christabel had various jobs in and around the village during her lifetime and worked at the Brook manufacturing after leaving school and Moulton College amongst many other jobs. Christabel met Eric Bandy whilst he was repairing the roads in Moulton, and they got married on Boxing Day in 1956, when there was so much snowfall that guests at the wedding reception were very few due to the weather! They were married for over 60 years, but unfortunately Christabel was left alone after Eric died in 1996. They had three children, two daughters, Kathleen and Susan, and a son, John. Christabel was a character and people would know her from walking around the village and getting on the bus, she liked her bingo in her later years and liked spending time with the family. Christabel was a Moulton girl through and through, and never considered moving from Moulton. She will be, and is, sadly missed by all her family and all who knew her. Christabel, rest in peace xxx



Colin CORNWELL. Colin was born in Cambridge in 1937 to parents, Bill and Queenie. He was one of four children, with brothers Roy and Mick and sister, Janet. He grew up in Mears Ashby, attending the village school there and then went on to Wellingborough Technical College, where he received

training in the building trades, along with his brothers. He learned skills that would be useful to him for the rest of his life. When Colin was in his early 20's he did 2 years National Service in Germany and around that time he met Diana, who became his wife in 1962. When they were courting, on a Friday evening he would sometimes drive into town in his Jaguar sports car to pick Diana up from Lloyds Bank, where she worked, and then drive to London to see a show. He later sold the Jaguar and used the money to buy the land where he built their first house. In 1964 Nick was born, followed by Jonathan in 1966 and Louise three years later. Colin loved sports, especially tennis, cricket and later golf – at which he won several trophies. He was a member of Northampton Cricket Club and made annual trips to see England playing test matches. Another interest was the theatre. He joined the Moulton Players as a stage manager and used his skills to help set up the Barn Theatre, including raking the auditorium. He had

a life-long love of going to see plays and concerts, many at the Derngate Theatre.

In his working life, after starting out as a carpenter, he went on to become Plant Manager at Phillips Electrical in Sywell, where he worked for over 25 years, together with his brother, Roy. He then went freelance as a property consultant, travelling all over the country successfully helping companies to find premises or sell their assets.

The family, including the grandchildren, have happy memories of gatherings at Colin and Diana's home over the years. The last period of his life wasn't easy as he cared for Diana through dementia and Parkinsons. In the last few years, he had his own health problems and was in and out of hospital, fighting off infections but still enjoying life at Bethany Homestead. He was a family man and is mourned by them all – and everyone who knew him.



Anne DICKENS - Etta Anne Ridgway (Anne), born in Great Bowden, near Market Harborough March 1926, died in July 2023 after a very short illness. Anne, along with husband Richard, whom she married in 1950, and sons Mark and Peter, moved to Moulton in 1956, living at Mill House, before building

and moving into The Grange in 1991. She had lifelong association with the Women's Institute, first joining Gayton Women's Institute in 1954 before moving to the Moulton Institute in 1957. She became vice-president of the Moulton Afternoon WI in 1976 and then president from 1984 through 1993. She was a regular at the East of England show, and thoroughly enjoyed acting in a number of plays culminating with her producing Alice in Wonderland in the 1980s. She also joined the Women's Voluntary Service for Civil Defence in 1964 and more recently, but still about 30 years ago, she became involved with the Trefoil Guild and regularly hosted Guides and Brownies events in the gardens at the Grange. Work wise, in 1944 Anne went to the Northampton School of Art before training to be an Occupational Therapist at Mount Vernon Hospital in Northwood, near Watford. She carried on with her Occupational Therapist career at St Andrews Hospital in Northampton for many years before retiring in 1975.

Anne loved all kinds of games and in the early days played hockey and tennis whenever she could. She also loved card games, including cribbage and, among many other card games, bridge. She joined a bridge club in the 1980s and continued to play for many years up until very shortly before her parting. For her 60th Birthday, Anne and Richard were given some golf lessons and they never looked back. They made it a mission to try and play as many golf courses as they could. They took membership at Overstone Golf Club and played as far afield as New Zealand and South Africa. In 1984, having visited with

friends who had places in Northern Cyprus, they bought a flat just outside Kyrenia. They of course found a golf course to play and became members of the Kulubu Golf Club. Anne carried on playing well into her 80s. Despite losing Richard the year before, she carried on going out with friends and family and enjoyed visiting whenever she could. Anne retained her love of life right up till the end. She will be missed by her surviving sons, Mark and Gyles, and their respective families and everyone who knew her.



David Moyser NEALE was born on 20th February 1930 in Coventry. When war came in 1939, he was evacuated to Laugharne in South Wales. David left school at 14 to be a pupil farmer. Having completed his apprenticeship at a farm near Basingstoke, he went to work on a farm near Rugby. He then decided to join the police force following in the footsteps of his grandfather, John Henry Neale, and his son, Robert.

After his training, David was posted to Kettering where he met Joan in the Weekley and Warkton church choir, and they later married. They moved to Corby and then to Northampton based at Wootton Park. David and Joan had 2 children, Alan in 1961 and Gillian in 1964. They moved to Parade Bank, Moulton in 1970. David always had a keen interest in motor vehicles, especially motorbikes. He owned a Brough Superior, a powerful twin V engine (the Rolls Royce of bikes at that time!). He also acquired several old agricultural engines including a Fordson tractor which he used to drive around the village. He liked to attend local crank ups and local steam rallies.

David joined in the life of the village fully, being Treasurer of the Gardeners Society for several years and drove patients to and from the hospital in the local driving scheme. He has been a good and faithful citizen, husband, father, grandfather, great grandfather, brother and friend to all.



Anthony (Tony) Frank PALMER passed away peacefully on 6th August 2023 after a short illness. He was born and grew up in Burton Latimer and had two brothers, Marshall and Robin. Tony joined the Northampton County Police

force in 1959 after completing his National Service with the medical corps in Hong Kong. He met his late wife Gillian (Jill) and they were married at St Margarets Church in Leicester in 1961 and moved into a police house together in Wellingborough, where they had their two children, Michael and Denise. In 1969 he requested to be transferred to Moulton and moved into the Manor Road Police House which had the office attached. He finally settled with his family at Parade Bank when they purchased their own new home.

He loved working in Moulton and in the early years would do his rounds on his bike, calling off at village phone boxes to report in. This led to him having his nickname of Pedlar Palmer. He ended his Police career working in the control room at Wootton Hall. He had an allotment when they were next to the cemetery on the Holcot Road and later in Boughton Road and was the chairman for a number of years. He enjoyed boating, owning three canal boats (all named Tanky after his beloved Jack Russell). Many a happy weekend was spent cruising the canals of Northamptonshire. In later life he passed an astronomy course and learnt how to play the ukulele, joining the Market Harborough Ukelele Club, but most of all he enjoyed spending time with his family and walking round Moulton chatting to anyone who would stop and talk.

He will be greatly missed by all that knew him but especially his son, daughter, four grandchildren, and two great grandchildren and all their partners.



Phyllis WOOD was born in 1925, a daughter to Mabel Kate (nee Tarrant) and Samuel James Robinson and sister to Harold. The family lived in Chater Street and Moulton remained Phyllis's home throughout her life. Like so many children at this time,

she suffered with rickets and for the first five or six years of her life, Phyllis wore leg irons to encourage the bones to grow correctly. She never let this hinder her and was determined to be included in her friends' games and adventures.

Her mother Kate wasn't going to let this define her little girl and was very far-sighted for the time, being an early adopter of whole food nutrition and osteopathy, resulting in Phyllis overcoming her ailment and riding her bike well into her seventies. These principles of determination, devotion and caring stayed with Phyllis throughout her life.

Growing up, Phyllis was surrounded by a host of relatives as her mother Kate was part of a large Moulton family. In fact, Tarrant Way and Siddons Way are named after family members. Phyllis loved learning and could have gone to grammar school but unfortunately the additional extra costs were beyond her parents' means, so she left school at the age of 14 and started work in a shoe factory and then worked as a mother's help looking after twins for a while.

The war came along and Phyllis went to work in munitions and after that she had various jobs in shoe factories. She and her great friend, Olive Ward, loved dancing and would cycle or walk to the local village dances. They even formed a skiffle group, the Poppies, for a bit of fun. Shortly after the war, Phyllis met Arthur Wood at a dance in Moulton. Arthur had returned from active service in the Royal Navy and was looking for lodgings, so Phyllis suggested he lodge with her Aunt Edith. Arthur began courting Phyllis and the relationship blossomed. Phyllis and Arthur were married in 1950.

The wedding was followed a year later by the birth of Linda. 20 months after Linda was born, Jane came along. The family were living in a one-up, one-down cottage in Chater Street at the time, which belonged to Phyllis's parents. Outside there was a well and a pump for water and a separate wash house and toilet. The daily routine was hard work, particularly with two small children and trying to ensure they didn't fall down the well! As soon as the houses in Brunting Road were built the family moved into the comparative luxury of No. 5. Several other village families became neighbours and great long-standing friendships were formed. Everyone was grateful for 'modern' homes, especially coming from cold and often damp cottages.

Money was tight but Phyllis was proud to keep her girls well dressed and often made clothes for them. With the help of produce from the garden and Arthur's allotment, the family were always well fed. During those early family years there was rabbit stew and dumplings for dinner at nan and pap's on a Tuesday. Sometimes Phyllis made brawn from a pig's head acquired from Fred Quincy, the Co-op butcher. Her steak and kidney puddings were outstanding and her hock and peas - perfection! Phyllis was always very caring and looked after both her parents when they were ill toward the end of their lives. Phyllis's mother Kate passed away in 1957, having suffered three strokes, and her father Sam died just before their third daughter Claire was born in 1965.

Phyllis always did her best for the family and had a succession of part-time jobs. She cleaned houses, took out-sourced work from a shoe factory, picked potatoes and cared for several elderly couples in the village. She was a school dinner lady for some time while Claire was at the primary school and really enjoyed the camaraderie with her fellow dinner ladies and the pupils. At one point she was as a cleaner at the Detention Centre along the Pitsford Road.

Phyllis loved the countryside and nature. She would often walk along the country lanes around the village with the children and her friends Olive Higham, Elsie O'Dell and Betty Higham. Phyll was a very sociable person and played an active role in the community for many years, sometimes attending Parish Council meetings. She was also a founding member of the Moulton Branch of the Royal British Legion Women's Section.

For 60 years The Royal British Legion was a big part of Phyllis's life. She sold thousands of poppies in her time and once had the honour of attending the annual Remembrance Day Service in the Royal Albert Hall. With the other ladies, she also raised funds through coffee mornings, beetle drives and bingo nights in the Club and bring and buy and raffle stalls at the village fete. She served at various times as Treasurer, Chairman and President until the Women's Branch was disbanded. Through the Legion, Phyllis made lifelong friends who helped to sustain her when Arthur died suddenly at only 66.

She also liked to help others and took on delivering Meals on Wheels in the village when she herself was a pensioner. Phyllis spent 34 years as a widow and although she missed Arthur a great deal, she was never despondent and always maintained a positive outlook on life, focusing on family, friends and village life. She also had some wonderful holidays with her friends Elsie O'Dell and Margaret James in Italy, Majorca and Canada. Phyllis had been brought up a Methodist but when the Chapel in Moulton sadly closed she began attending Moulton Parish Church. She had been baptised there and when she was 70 she decided to get confirmed in her faith. As the oldest resident of Moulton to be born in the village, Phyllis was asked to officially open the new Community Centre in 2017, at the age of 91. She was truly honoured and enjoyed the afternoon tremendously.

Phyllis loved company of any age and was pleased to share her mementos of Arthur's war service with her eldest grandson, Adam. She was very proud of both her grandsons and took great delight in her great-granddaughter Alexis.

During her last years she found herself increasingly housebound, though if ever a trip out was suggested she would be there without hesitation. The family continued to care for her at home with the support of friends and neighbours. Eventually it became necessary to employ carers three times a day as well. She accepted all this entailed with her usual good grace. She had the ability to adapt to change and never complained and was always pleased to see a visitor.

Whatever her circumstances, Phyllis was always a source of unconditional love, support and sound advice. She saw the best in all of us. She passed away peacefully aged 98 on September 14th 2023. She is irreplaceable and will be sadly missed by those of us who knew and loved her.

She was a true Moultonian.

Contact: Angela Campling

Tel: 01604 644280

Email: angela.campling1@btinternet.com

In writing to: Dairy Farmhouse, 1 Overstone Road, Moulton, Northants NN3 7UG

What's On

Your Regular Weekly Groups

MON	TUES	WED	THUR	FRI	SAT	SUN
Moulton Tots 10.00 Moulton Church Centre (Term time only)	Stay & Play (Under 18 months) 9.30 - 11.30 Moulton Library Health & Wellbeing Hub	Mums & Tots 9.00 - 11.00 Moulton Evangelical Church (Main Church) (Term time only)	Little Kickers 9.30 - 12.00 Moulton CC	Silver Swans Ballet for over 55's 9.15 - 10.00 Moulton Guide Hall	Coffee Shop 10.00 - 12.00 Moulton Theatre	Moulton Minis Soccer Club 9.00 - 10.00 Moulton Football Club
White Tiger Taekwon-Do 10.00 - 11.00 Moulton Guide Hall	Renew Wellbeing Café 9.30 - 12.00 Moulton Parish Church	Prayer Meeting 9.30-10.00 Carey Baptist Church	Storytime 11.30 - 12.00 Moulton Library Health & Wellbeing Hub	Little Kickers 9.30 - 12.00 Moulton CC	Girls Football Sessions @ Moulton 10.30 - 11.30 Moulton Football Club	Table Tennis Club 10.00 - 12.00 Moulton CC
Pilates with Maree 10.45 - 11.30 Moulton CC	Walking Football 10.00 - 11.00 Moulton Football Club	Moulton Tots 10.00 Moulton CC	Crafternoon 13.00 - 15.00 Moulton Library Health & Wellbeing Hub	Games Morning 10.00 - 12.00 Moulton Library Health & Wellbeing Hub	Storytime 11.30 - 12.00 Moulton Library Health & Wellbeing Hub	Bingo 13.00 Moulton Club
Stay & Play Under 5's 13.00 - 15.00 Moulton Library Health & Wellbeing Hub	Silver Swans Ballet for over 55's 11.00 - 11.45 Moulton Guide Hall	FitSteps 10.00 Fitsteps FAB 11.05 Moulton Guide Hall	Library Learners 15.30 - 16.30 Moulton Library Health & Wellbeing Hub	Walking Football 10.00 - 11.00 Moulton Football Club		
Cuppa@Carey 14.30 - 16.00 Carey Baptist Church	Wellbeing Appointments 13.00 - 17.00 Moulton Surgery	Music Bugs 10.00 - 12.00 Moulton CC	Walking Netball Club 16.30 Moulton College	Community Lunch Club 13.00 Moulton Library Health & Wellbeing Hub		
Rainbows 17.15 - 18.15 Moulton Guide Hall	Construction Club 13.30 - 16.30 Moulton Library Health & Wellbeing Hub	Coffee Morning 10.00 - 12.00 Moulton Evangelical Church (Coffee Lounge)	Brownies 18.15 - 19.45 Moulton Guide Hall	Bounce & Rhyme 13.15 - 13.45 Moulton Library Health & Wellbeing Hub		
Zumba 17.45 - 18.45 Moulton CC	White Tiger Taekwon-Do 19.00 (beg.) 20.00 (senior) Moulton Guide Hall	Health Walk (35-45 mins) 10.30 Meet o/s Evangelical Church	Walking Football - General & Ladies Only Session 18.00 - 19.00 Moulton Football Club	Rhymetime 14.00 - 14.30 Moulton Library Health & Wellbeing Hub		
Boys Brigade 18.00 onwards Carey Baptist Church Hall (Term time only)	Scouts 19.30 - 21.00 Scout HQ, The Nurseries	Meet, Greet & Move Your Feet 10.30 - 12.30 Moulton Library Health & Wellbeing Hub	Cub Scouts 18.00 - 19.30 Scout HQ, The Nurseries	White Tiger Taekwon-Do 19.00 - 20.00 (all grades) Moulton Village Hall		
Beavers 18.15 - 19.15 Scout HQ, The Nurseries	Moulton 77 Brass Band 19.45 - 22.00 Moulton Village Hall	DDH Community Lunch Club 12.15 Chappell House (£5 for a 2-course hot dinner)	Moulton Morris Men 19.30 Moulton Primary School			
Pilates with Maree 18.30-19.15 Moulton CC		Luncheon Club 12.15 Moulton Church Centre (Fortnightly)				
Moulton Brownies 18.30 - 20.00 Guide Hall		Health & Wellbeing Choir 14.00 - 16.00 Moulton CC				
Walking Football 19.00 - 20.00 Moulton Football Club		The Gap Primary School After School Club 15.15 Moulton Church Centre (Term time only)				
Moulton Church Bell Ringers 19.30 Moulton Church		Community Larder Moulton Library & Wellbeing Hub				
Keep Fit Class 19.30 - 20.45 Moulton Village Hall		Rainbows 17.45 - 19.00 Moulton Guide Hall				
		Guides and Rangers 19.30 - 21.00 Moulton Guide Hall				

Your Regular Monthly Groups

MON	TUES	WED	THUR	FRI	SAT	SUN
Men's Breakfast Club 10.00 eat AT MCC (1st and 3rd Mon of the month)	Women's Breakfast Club 10.00 eat AT MCC (1st and 3rd Tues of the month)	Lunch Club Moulton Parish Church (2nd and 4th Wed of the month)	Sling Library 9.00 - 11.00 Moulton Library Health & Wellbeing Hub (Various dates)	Musical Memories 14.00 - 15.30 Moulton CC (Various Fridays)	Craft Club 9.30 Moulton CC (1 st Sat of the month, excl Jul & Aug)	Made By Me Social Crafting 14.00 Moulton Library Health & Wellbeing Hub (1st Sun of the month)
Cuppa Connections 13.00 - 14.30 Chappell House (4th Mon of the month)	Ladies Fellowship 14.00 Moulton Church Centre (1 st Tues of the month)	Evening WI Skittles Practice 19.00 Moulton Club (3 rd Wed of the month)	Evening WI Ladies That Natter 19.15 Moulton Club (3 rd Thur of the month)	Dangerous Club 18.30 - 20.00 Moulton Church Centre (2nd Fri of the month)	Who Let The Dads Out 09.30 Moulton Church Centre (2nd Sat of the month)	Silent Book Club 17.00 - 19.00 Moulton Library Health & Wellbeing Hub (Various dates)
Junior Book Club 16.00 - 17.00 Moulton Library Health & Wellbeing Hub (1st Mon of the month)	Moulton Tuesday Club 14.00 - 16.00 The Guide Hall (4th Tues of the month)	Healing Space 19.30 Carey Baptist Church (1st Wed of the month)		Moulton History Society 19.30 Moulton Club (3rd Fri of the month, excl Dec & Jan, & on 4th Fri in May)	Network Arts 10.00 - 16.00 Moulton CC (2 nd Sat of the month)	Quiz Night at the Artichoke Pub (1st & 3rd Sun of the month)
Adult Book Club 19.00 - 21.00 Moulton Library Health & Wellbeing Hub (various Mondays)	Moulton Evening WI 19.00 / 19.30 Moulton CC (2 nd Tues of the month)	Gardeners' Society General Meeting 19.30 Moulton CC (4 th Wed of the month, excl Jun, Aug & Dec)		Final Fridays - Social Evening for Members & Friends Moulton Theatre (Last Friday of the month)	Hardy Plant Society 14.00 Moulton CC (1st Sat of the month, excl Jul & Aug)	
		Evening WI Book Club 19.30 Moulton Club (2 nd Wed of the month)				

While every attempt is made to ensure that all information is current and correct, please be aware that timings may be different during school holidays/bank holidays, or only run during term time, etc. Please check direct with organiser before attending.

SCHOOL TERM DATES

Moulton Primary School

28th March – School closes
 15th April – Teacher Training Day
 16th April – School re-opens
 24th May – School closes
 3rd June – School re-opens
 19th July – School closes
 22nd & 23rd July – Teacher Training Days
 2nd & 3rd September – Teacher Training Days
 4th September – School re-opens

Moulton College (Further Education Students only)

28th March – Term finishes
 15th April – Term starts
 27th - 31st May – Study week
 21st June – Term finishes

Moulton School & Science College

27th March – School closes
 28th March – Teacher Training Day
 15th April – School re-opens
 24th May – School closes
 3rd June – School re-opens
 23rd July – School closes
 2nd & 3rd September – Teacher Training Days
 4th & 5th September – Yr 7 & Yr 12 Transition Days Only
 6th September – School re-opens

What Not To Miss

March

- 2 Moulton College Foundation Learning SEN Open Event 09.00-12.00 *Moulton College, The Barn, Gate 1, Pitsford Road, Moulton*
- 4-9 Theatre Production of Deathtrap by Ira Levin 19.30 *Moulton Theatre*
- 8 Moulton WI 'Baby Basics' Fundraiser *Moulton Club*
- 5 Moulton Parish Council Meeting 19.15 *Moulton Community Centre*
- 16 Moulton College Open Event 09.30-12.30 *Moulton College, Gate 3, Pitsford Road, Moulton*
- 17 Indoor Car Boot Sale 10.00-12.00 *Moulton Community Centre*
- 29 At the Foot of the Cross Service 10.30 *Moulton Parish Church*

April

- 2 Moulton Parish Council Meeting 19.15 *Moulton Community Centre*
- 20 PAWS@MCC 13.00-15.00 *Moulton Community Centre*

May

- 7 Blood Donation *Moulton Community Centre*
- 11-19 Moulton Village Festival Week – See Full Programme listed adjacent
- 13-18 Theatre Production of Anatomy of a Murder by Elihu Winer 19.30 *Moulton Theatre*
- 16 Moulton Village Festival Bingo *Moulton Community Centre*
- 21 Moulton Library Health & Wellbeing Hub - Health & Wellbeing Day 13.00-19.00 *Moulton Community Centre*
- 21 Moulton Parish Council NDP Consultation 13.00-19.00 *Moulton Community Centre*
- 21 Moulton Parish Council Annual Parish Meeting, followed by the Annual Council Meeting 19.00 *Moulton Community Centre*

June

- 4 Moulton Parish Council Meeting 19.15 *Moulton Community Centre*
- 9 Moulton College LEAF Open Farm Sunday 10.00-14.00 *Moulton College, Gate 4, Rural Hub, Pitsford Road, Moulton*
- 15 Moulton College Open Event 09.00-12.30 *Moulton College, Gate 3, Pitsford Road, Moulton*

July

- 2 Moulton Parish Council Meeting 19.15 *Moulton Community Centre*
- 7 Open-air Theatre Experience *Public Gardens*
- 15-20 Theatre Production of The Importance of Being Earnest by Oscar Wilde 19.30 *Moulton Theatre*

August

- 10 Gardeners' Annual Show 14.00-15.30 *Moulton Community Centre*
- 31 GITG 2024 (Ticket Only Event) Gates Open 13.00 / Music 14.00-22.00 *Public Gardens*

MOULTON VILLAGE FESTIVAL PROGRAMME

11th – 19th MAY 2024

- Sat 11th **GARDENERS PLANT SALE & COFFEE MORNING**
Moulton Community Centre 10.30am - 12pm
- Sun 12th **FAMILY FUN RUN**
Moulton Club Car Park 11.15/11.45am meet - 12.00pm race
Entry forms: Co-op, online and on page 11 of this magazine
- Mon 13th **WI FASHION SHOW "Rock the Frocks"**
Moulton Club 7.30pm Admission by ticket £4
- Tue 14th – Sun 19th **ART EXHIBITION**
Village Autos
- Sun 12th – Tues 14th **MOULTON MEMORIES EXHIBITION & Human Library Experience**
Moulton Library Health & Wellbeing Hub
- Thurs 16th **FESTIVAL BINGO**
Moulton Community Centre 19:00/19:30
- Fri 17th **FOLK SONG NIGHT**
In the Marquee at Moulton Primary School 8pm
Real Ale Bar - BOOK TICKETS EARLY
Advance tickets £15 - Call 01604 646818 to book £17 on the door.

FESTIVAL SATURDAY – 18th MAY

- Moulton Morris hosting visiting Morris teams from all over Britain, crafts, stalls and displays in the marquee - licensed bar
- 9.45am **CHILDRENS BOWER COMPETITION** in Public Gardens
- 9.45am **REFRESHMENTS & STALLS** at Evangelical Church
- 10.00am **FLOWER FESTIVAL, STALLS, LUNCHESES & TEAS** at Carey Baptist Church
- 10.00am **CROWNING of the 2024 MAYQUEEN** in Public Gardens
- 10.30am **TRADITIONAL MAYCART PROCESSION**
- 11.00am **MOULTON CHURCH events (inc Festival Café)**
- 11.00am **STALLS OPEN:** the Public Gardens, Primary School Site, Church Centre and in the Festival Marquee at the Primary School
- 2.00pm **CARNIVAL PARADE**
- 2.30pm onwards **STALLS, DISPLAYS, EXHIBITIONS, MORRIS DANCING**
- 4.00pm **MASSED DISPLAY BY ALL MORRIS TEAMS** in Public Gardens
- 7.30pm **FESTIVAL BARN DANCE/BEER FEST** in the Festival Marquee

SUNDAY 19th MAY

- Noon **MORRIS DANCING** outside the Parish Church
- 4pm **SONGS OF PRAISE** Service (TBC)

FESTIVAL BOX OFFICE - 01604 646818 - 9 ALIBONE CLOSE, MOULTON

Index of Advertisers

Please mention the 'Moulton Scene' when contacting any of these companies

Carpets and Flooring:

Anderson Carpets, 36

Computing:

Computer Doctors, 6

Hemmings IT, 24

Electrical, Aerials and Satellites:

Bright Spark Electrical, 6

Redrup Electrical Services, 37

Zeus Electrical Contractors Ltd, 7

Food/Drink/Hotel/Events:

eat AT MCC, 25

eat AT MCC Afternoon Tea, 27

eat AT MCC Catering, 27

Moulton Community Centre, 27

The Poplars Hotel, 36

Vespaccino, 19

Village Kitchen Catering, 6

Garage, Automobile and Travel:

Moulton Autocare, 37

Moulton Minibus Service, 8

Village Autos, 26

Gardening, Plants, Tree Surgery and Landscaping:

AJ Block Paving Ltd, 37

All Seasons Garden Services, 24

AR Gardening Services, 6

Garden & Handyman Services, 26

John Bland Treeworks, 36

K. Worley, Buildings & Gardens, 9

Rob's Nursery, 19

Sywell Mowers, 20

Hairdressers and Beauticians:

The Style Xchange, 26

Health & Wellbeing:

Moulton Library Health & Wellbeing Hub, 29

Moulton Pharmacy, 6

Penny Hunt - Podiatry/Chiropody, 6

Sharon Morrow - Rapid Transformational Therapy, 20

Household and Building:

Albion Clearance Services - House Clearance & Rubbish Removal, 9

Cloudy 2 Clear Windows - Double Glazing Replacement, 8

Handy Creatives, 21

Michael Palmer - Carpenter, 26

MJC Joinery, 36

NJM Locksmiths, 36

Pacey Plastering, 21

Sparkle Cleaning Services, 36

Swannell Builders, 8

Vickie's Cleaning & Carpet Company, 18

Legal and Financial

Adders, Accountants and Taxation Advisors, 9

B R Bamford Chartered Accountants, 26

Brixworth Legal - Solicitors & Mediators, 33

New Homes/Retirement Villages/Estate Agents

Jackson Grundy, Estate Agents, 7

Jon & Co, Estate Agents, Outside Back Cover

Nurseries/Schools/Tuition:

French for Fun, 21

Kip McGrath Education Centre, 37

Stonewell Cottage Day Nursery, 20

Plumbing/Heating/Bathroom Services:

Gas Works, Gas and Heating Maintenance, 9

M J Dimmer - Central Heating, Plumbing & Gas, 18

R Osborne, Plumbing & Heating, 21

Spinney Hill Plumbing, 24

T & J Plumbing and Maintenance, 9

Printing/Photography/Signage:

Bring Me Sunshine Photography, 18



JON & CO

E S T A T E A G E N T S
M O U L T O N

YOUR MOVE MATTERS MORE WITH JON & CO

Request a **FREE**, No-Obligation Valuation with one of our Moulton Village experts today!



www.jonandco.co.uk



hello@jonandco.co.uk



01604 389118

Moulton Community Centre - Sandy Hill, Reedings, Moulton, Northants, NN3 7AX

Here if you need us...

Here at Moulton Community Centre we have a variety of resources available, to anyone who may find themselves in need. Please help yourself when you're visiting.

Kindness Rail - Browse our kindness rail if you are in need of some clothing. Jackets, jumpers, children's clothes, hats, scarves and blankets are available.

Sanitary Products - Towels and liners can be found in all toilets throughout the building. Need to take some sanitary products home for the night or weekend? Please take a ready-made bag!

Baby & Toddler - Nappies, wipes and spare clothes for little accidents are also available. These can be found in each of the disabled toilets, alongside our baby-changing facilities.

Snack Basket - Visit the welcome desk where you will find our complimentary snack basket, help yourself to some fresh fruit or a pastry.



**MOULTON
PARISH COUNCIL**

